

City of Pittsburg, Kansas
Commission Meeting Agenda
Tuesday, January 14, 2025
5:30 p.m.

Table of Contents

Agenda	1
December 17, 2024 Minutes	3
December 23, 2024 Minutes	8
Official Newspaper Memo	9
Official Depositories Memo	10
Pinamonti Physical Therapy, P.A. Municipal Quit Claim Deed	11
Poly Cart Purchase	14
Land Bank Board of Trustees Appointments	16
Appropriation Ordinance	25
Conditional Use Permit – 1613 North Walnut	37
Conditional Use Permit – 1609 Woodland Terrace	39
Disposition of Bids – Washington Pre-School Project	57
Neighborhood Advisory Council Appointments	60

CITY OF PITTSBURG, KANSAS
COMMISSION AGENDA
Tuesday, January 14, 2025
5:30 PM

CALL TO ORDER BY THE MAYOR:

- a. Flag Salute Led by the Mayor
- b. Public Input

CONSENT AGENDA (ROLL CALL VOTE):

- a. Approval of the December 17, 2024, Special City Commission Meeting minutes.
- b. Approval of the December 23, 2024, Special City Commission Meeting minutes.
- c. Approval of staff recommendation to designate The Morning Sun as the official City newspaper.
- d. Approval of staff recommendation to designate Arvest, BMO Harris Bank, Community National Bank, Commerce Bank, Equity Bank, GNBank, Labette Bank, Landmark Bank, and US Bank as official City depositories.
- e. Approval of a Municipal Quit Claim Deed from the City of Pittsburg to Pinamonti Physical Therapy, P.A.
- f. Approval of staff request to authorize the purchase of poly carts from Elliott Equipment Co., in the amount of \$45,502.34.
- g. Approval of the appointment of Amy Loy Herring, Ann Lee, and James Sukraw to first three-year terms as members of the Land Bank Board of Trustees effective immediately and concluding on December 31, 2027.
- h. Approval of the Appropriation Ordinance for the period ending January 14, 2025, subject to the release of HUD expenditures when funds are received.

CONSIDER THE FOLLOWING:

- a. **CONDITIONAL USE PERMIT – 1613 NORTH WALNUT – Consider the recommendation of the Planning Commission/Board of Zoning Appeals to approve the request submitted by Jose R. Constanza for a Conditional Use Permit to allow a church at 1613 North Walnut. **Approve or disapprove the recommendation. If the Governing Body disapproves the Conditional Use Permit request, they may, by a simple majority, deny the request and send it back to the Planning Commission/Board of Zoning Appeals for further consideration.****

CITY OF PITTSBURG, KANSAS
COMMISSION AGENDA
Tuesday, January 14, 2025
5:30 PM

- b. **CONDITIONAL USE PERMIT – 1609 WOODLAND TERRACE - Consider the recommendation of the Planning Commission/Board of Zoning Appeals to approve the request submitted by Sheena Kosman for a Conditional Use Permit to allow an in-home day care at 1609 Woodland Terrace. **Approve or disapprove the recommendation. If the Governing Body disapproves the Conditional Use Permit request, they may, by a simple majority, deny the request and send it back to the Planning Commission/Board of Zoning Appeals for further consideration.****

- c. **DISPOSITION OF BIDS – WASHINGTON PRESCHOOL PROJECT – Consider staff recommendation to award the bids for the Washington School Preschool Project. **Approve or disapprove staff recommendation and, if approved, authorize the Mayor to sign a letter stating that single bids were received and asking the Kansas Department of Commerce for approval.****

- d. **NEIGHBORHOOD ADVISORY COUNCIL APPOINTMENTS – Consider staff recommendation to appoint two individuals to fill unexpired terms as members of the Neighborhood Advisory Council, with one new member representing the Northeast quadrant of Pittsburg, and the other new member representing the Southeast quadrant of Pittsburg, effective immediately and concluding on December 31, 2025. **Appoint two members to the Neighborhood Advisory Council.****

ADJOURNMENT

OFFICIAL MINUTES
OF THE MEETING OF THE
GOVERNING BODY OF THE
CITY OF PITTSBURG, KANSAS
December 17, 2024

A Special Session of the Board of Commissioners was held at 5:30 p.m. on Tuesday, December 17, 2024, in the City Commission Room, located in the Law Enforcement Center, 201 North Pine, with Mayor Stu Hite presiding and the following members present: Cheryl Brooks, Dawn McNay, and Chuck Munsell. Commissioner Ron Seglie participated in the meeting by phone.

FLAG SALUTE – Mayor Hite led the flag salute.

INVOCATION – Tom Wherman, on behalf of the St. John Lutheran Church, provided an invocation.

PITTSBURG POSITIVE – Mayor Hite recognized Johnna Norton, Denise Fitzpatrick and Debby Brock with Pittsburg Positive certificates.

COMMISSIONER SEGLIE – Mayor Hite noted that Commissioner Seglie is participating in the meeting by phone.

ELECTION OF MAYOR – On motion of Hite, seconded by Seglie, the Governing Body elected Dawn McNay as Mayor. Motion carried with Brooks and Munsell voting in opposition.

SWEARING IN OF MAYOR – The City Clerk administered the Oath of Office to Mayor McNay.

PRESENTATION OF CEREMONIAL GAVEL – Newly elected Mayor McNay presented outgoing Mayor Stu Hite with a ceremonial gavel.

PRESIDENT OF THE BOARD SELECTION – Commissioner Munsell suggested the selection of the President of the Board be on a rotating basis.

ELECTION OF PRESIDENT OF THE BOARD – On motion of Hite, seconded by McNay, the Governing Body elected Ron Seglie as the President of the Board. Motion carried with Brooks and Munsell voting in opposition.

APPROVAL OF MINUTES – On motion of Hite, seconded by Brooks, the Governing Body approved the November 26, 2024, City Commission Meeting minutes as presented. Motion carried.

ORDINANCE NO. S-1103 – On motion of Hite, seconded by Brooks, the Governing Body approved Ordinance No. S-1103, amending Ordinance No. S-1099 fixing the salary and compensation of the officers and employees of the City of Pittsburg, Kansas, and authorized the Mayor to sign the Ordinance on behalf of the City. Motion carried.

OFFICIAL MINUTES
OF THE MEETING OF THE
GOVERNING BODY OF THE
CITY OF PITTSBURG, KANSAS
December 17, 2024

DISPOSITION OF BIDS – FIXED LOCATION GENERATOR INSPECTION AND MAINTENANCE – On motion of Hite, seconded by Brooks, the Governing Body awarded the bid for the annual Fixed Location Generator Inspection and Maintenance Contract for the period of January 1, 2025, to December 31, 2027, to CDL Electric Company, Inc., of Pittsburg, Kansas, based on their low bid of \$11,500.00 annually and authorized the Mayor and City Clerk to execute the contract documents once prepared. Motion carried.

DISPOSITION OF BIDS – ELEVATOR AND LIFT FULL MAINTENANCE CONTRACT – On motion of Hite, seconded by Brooks, the Governing Body awarded the bid for the annual Elevator and Lift Full Maintenance Contract for the period of January 1, 2025, to December 31, 2027, to MEI, Total Elevator Solutions of Springfield, Missouri, based on their bid of \$ 25,968.00 annually and authorized the Mayor and City Clerk to execute the contract documents once prepared. Motion carried.

DISPOSITION OF BIDS – BULK OIL AND DEF PURCHASE – On motion of Hite, seconded by Brooks, the Governing Body awarded the bid for the Bulk Oil and DEF for the period of January 1, 2025, to December 31, 2025, to Meridian Oil and Equipment of Carl Junction, Missouri, based on their low bid, and authorized the Mayor and City Clerk to execute contract documents once prepared.

AGRICULTURAL LAND LEASE – BIANCARELLI – On motion of Hite, seconded by Brooks, the Governing Body entered into an Agricultural Land Lease between Kenneth Biancarelli and the City of Pittsburg, in which Mr. Biancarelli will lease 148.14 acres of tillable land and grass land located at the Atkinson Municipal Airport, in the amount of \$8,147.70, for the term beginning on January 1, 2025, and concluding on December 31, 2025, and authorized the Mayor to sign the lease on behalf of the City. Motion carried.

MEMORIAL AUDITORIUM AND CONVENTION CENTER FEES AND CHARGES – On motion of Hite, seconded by Brooks, the Governing Body approved the proposed fee schedule for the Memorial Auditorium and Convention Center. Motion carried.

2025 CEREAL MALT BEVERAGE LICENSES – On motion of Hite, seconded by Brooks, the Governing Body approved the applications submitted by Rhodes Grocery, Inc. dba Ron's Supermarket (310 East Centennial), The Corner Patio Pittsburg, LLC dba The Corner Patio (919 North Broadway), Walgreen Co. dba Walgreens #09049 (1911 North Broadway), Pitt Stop, LLC dba Pitt Stop (902 South Joplin), Pitts Retail, LLC dba Galaxy Food Mart III (1101 West 4th Street), EK Enterprise, LLC dba Pitt Express (302 West 4th Street), Pete's of Erie, Inc. dba Pete's #13 (4002 North Broadway), Pete's of Erie, Inc. dba Pete's #07 (1307 South Broadway), Dillon Companies, LLC dba Dillon's #108 (2600 North Broadway), Main Street Axe Company (216 South Broadway), The Meat Shed, LLC dba The Meat Shed - for consumption on the premises (2401 South Rouse), The Meat Shed, LLC dba The Meat Shed - for sale in the original unopened container (2401 South Rouse), Horton's Pizza Plus, Inc. dba Horton's Pizza Plus (1601 East 4th Street), Bo's 1 Stop (1116 West 4th Street), WS Mart, LLC dba Pittsburg Mart (3201 Noarth Rouse), DG Retail, LLC dba Dollar General Store #13065 (2004 South Rouse), DG Retail, LLC dba Dollar General Store #23865 (1026 East 4th Street), DG Retail, LLC dba Dollar General Store #3785₄ (2810 North Broadway), DG Retail, LLC dba

OFFICIAL MINUTES
OF THE MEETING OF THE
GOVERNING BODY OF THE
CITY OF PITTSBURG, KANSAS
December 17, 2024

Dollar General Store #18856 (820 West 4th Street), Commodore Barry Corporation dba Knights of Columbus (407 East 11th Street), and Pittsburg Investments, LLC dba Pitts Hookah Lounge (2707 "C" North Broadway) to sell Cereal Malt Beverages for the year 2025 and directed the City Clerk to issue the licenses. Motion carried.

ACTIVE TRANSPORTATION ADVISORY BOARD REAPPOINTMENT – On motion of Hite, seconded by Brooks, the Governing Body reappointed Debra Anthony to a second four-year term as the Health Care Industry Advocate on the Active Transportation Advisory Board (ATAB) effective January 1, 2025, and concluding on December 31, 2028. Motion carried.

AIRPORT ADVISORY BOARD REAPPOINTMENTS – On motion of Hite, seconded by Brooks, the Governing Body reappointed Ron Brock, Geoffrey Hines and David Wyckoff to second three-year terms as members of the Airport Advisory Board effective January 1, 2025, and concluding on December 31, 2027. Motion carried.

BOARD OF ZONING APPEALS/PLANNING COMMISSION APPOINTMENTS AND REAPPOINTMENT – On motion of Hite, seconded by Brooks, the Governing Body appointed Blake Lallemand and Kyle Michael to first three-year terms and reappointed Mike Hanika to a second three-year term as members of the Board of Zoning Appeals/Planning Commission effective January 1, 2025, and concluding on December 31, 2027. Motion carried.

DOWNTOWN ADVISORY BOARD REAPPOINTMENT – On motion of Hite, seconded by Brooks, the Governing Body reappointed Skip Urich to a second two-year term as a member of the Downtown Advisory Board effective January 1, 2025, and concluding on December 31, 2026. Motion carried.

ECONOMIC DEVELOPMENT ADVISORY COMMITTEE REAPPOINTMENTS – On motion of Hite, seconded by Brooks, the Governing Body reappointed Shane Kannarr, Rick Martin and Jeff Wilbert to second three-year terms as members of the Economic Development Advisory Committee effective January 1, 2025, and concluding on December 31, 2027. Motion carried.

MEMORIAL AUDITORIUM ADVISORY BOARD REAPPOINTMENTS – On motion of Hite, seconded by Brooks, the Governing Body reappointed Seth Harley and Cooper Neil to second four-year terms as members of the Memorial Auditorium Advisory Board effective January 1, 2025, and concluding on December 31, 2028. Motion carried.

APPROPRIATION ORDINANCE – On motion of Hite, seconded by Brooks, the Governing Body approved the Appropriation Ordinance for the period ending December 17, 2024, subject to the release of HUD expenditures when funds are received with the following roll call vote: Yea: Brooks, Hite, McNay, Munsell and Seglie. Motion carried.

CONSENT ORDER – WASTEWATER TREATMENT PLANT PROJECT – On motion of Brooks, seconded by Hite, the Governing Body approved a Consent Order from the Kansas Department of Health and Environment (KDHE) in regard to the construction of the Wastewater Treatment Plant and authorized the Mayor and City Clerk to execute the Order on behalf of the City. Motion carried.

OFFICIAL MINUTES
OF THE MEETING OF THE
GOVERNING BODY OF THE
CITY OF PITTSBURG, KANSAS
December 17, 2024

MEDICAL DIRECTOR PROFESSIONAL SERVICES AGREEMENT – DR. TOMOTHY STEBBINS – On motion of Hite, seconded by Munsell, the Governing Body approved a Medical Director Professional Services Agreement between the City of Pittsburg and Dr. Timothy Stebbins, and authorized the Mayor to sign the Agreement on behalf of the City. Motion carried. Absent: Seglie.

Commissioner Seglie ended his phone participation during discussion of the Medical Director Professional Services Agreement.

PUBLIC HEARING – PROPERTY TAX ABATEMENT – ATKINSON INDUSTRIES, LLC – Following a Public Hearing, on motion of Hite, seconded by Brooks, the Governing Body approved a six-year tax abatement request submitted by Atkinson Industries, LLC, and directed staff to prepare the necessary Ordinance and authorized the Mayor to sign the appropriate documents on behalf of the City. Motion carried. Absent: Seglie.

No comments were received during the Public Hearing.

RESOLUTION NO. 1291 – On motion of Hite, seconded by Munsell, the Governing Body approved Resolution No. 1291, authorizing the offering for sale of Taxable General Obligation Bonds, Series 2025-A of the City of Pittsburg, Kansas, and authorized the Mayor to sign the Resolution on behalf of the City. Motion carried. Absent: Seglie.

DISPOSITION OF BIDS – WASHINGTON SCHOOL PROJECT – Commissioner Hite moved, seconded by McNay, to accept the bids for specific trade areas for the Washington School Project, and to authorize the Mayor to sign the necessary documents on behalf of the City. Motion failed with Brooks and Munsell voting in opposition. Absent: Seglie.

VARIANCE REQUEST – MARIETTA – On motion of Brooks, seconded by Munsell, the Governing Body approved the recommendation of the Planning Commission/Board of Zoning Appeals to grant the request submitted by Michael Marietta for a variance at 4 Deer Run Lane to allow the construction of a secondary structure greater than 900 sq ft. Motion carried. Absent: Seglie.

CITY OF PITTSBURG HOUSING INCENTIVE PROGRAM (CHIP) – On motion of Hite, seconded by Munsell, the Governing Body approved an Intergovernmental Agreement for the City of Pittsburg Housing Incentive Program (CHIP), and authorized the Mayor to sign the Agreement on behalf of the City. Motion carried. Absent: Seglie.

DOWNTOWN ADVISORY BOARD APPOINTMENTS – On motion of Munsell, seconded by Brooks, the Governing Body appointed McKayla Crystal (downtown property owner) to a first two-year term as a member of the Downtown Advisory Board effective January 1, 2025, and concluding December 31, 2026. Motion carried. Absent: Seglie.

DOWNTOWN ADVISORY BOARD APPOINTMENTS – On motion of Hite, seconded by Brooks, the Governing Body appointed Trista Shuster (at large) to a first two-year term as a member of the Downtown Advisory Board effective January 1, 2025, and concluding December 31, 2026. Motion carried. Absent: Seglie.

OFFICIAL MINUTES
OF THE MEETING OF THE
GOVERNING BODY OF THE
CITY OF PITTSBURG, KANSAS
December 17, 2024

ECONOMIC DEVELOPMENT ADVISORY COMMITTEE APPOINTMENT – On motion of Hite, seconded by Brooks, the Governing Body appointed Brandee Johnson to a first three-year term as a member of the Economic Development Advisory Committee effective January 1, 2025, and concluding December 31, 2027. Motion carried. Absent: Seglie.

MEMORIAL AUDITORIUM ADVISORY BOARD APPOINTMENTS – On motion of Hite, seconded by Brooks, the Governing Body appointed Joella R. Skyles to an unexpired term effective January 1, 2025, and concluding December 31, 2026, and appointed Emily George and Jeff Wilbert to first four-year terms as members of the Memorial Auditorium Advisory Board effective January 1, 2025, and concluding December 31, 2028. Motion carried. Absent: Seglie.

ADJOURNMENT - On motion of Hite, seconded by Brooks, the Governing Body adjourned the meeting at 6:33 p.m. Motion carried. Absent: Seglie.

Dawn McNay, Mayor

ATTEST:

Tammy Nagel, City Clerk

OFFICIAL MINUTES
OF THE MEETING OF THE
GOVERNING BODY OF THE
CITY OF PITTSBURG, KANSAS
December 23, 2024

A Special Session of the Board of Commissioners was held at 5:00 p.m. on Monday, December 23, 2024, in the City Commission Room, located in the Law Enforcement Center, 201 North Pine, with President of the Board Ron Seglie and the following members present: Cheryl Brooks and Ron Seglie. Mayor Dawn McNay and Commissioner Stu Hite participated in the meeting by phone. Commissioner Chuck Munsell was absent.

PUBLIC HEARING – 2024 BUDGET AMENDMENT – Following a Public Hearing, on motion of Hite, seconded by Brooks, the Governing Body approved the amended use of funds in the 2024 budget. Motion carried. Absent: Munsell.

ADJOURNMENT - On motion of Brooks, seconded by McNay, the Governing Body adjourned the meeting at 5:01 p.m. Motion carried. Absent: Munsell.

Dawn McNay, Mayor

ATTEST:

Tammy Nagel, City Clerk



Interoffice Memorandum

TO: Daron Hall, City Manager
FROM: Tammy Nagel, City Clerk
DATE: January 6, 2025
SUBJECT: Agenda Item – Designation of Official Newspaper

Kansas Statutes require that the Official City Newspaper be designated by formal Governing Body action. It is our practice to designate the Official Newspaper each year following reorganization of the Board of Commissioners.

I recommend that we continue to utilize *The Morning Sun* as the City's Official Newspaper.

Please place an item on the agenda for the City Commission Meeting of January 14th, 2025, designating *The Morning Sun* as the Official City Newspaper.

I will be available to answer any questions at your convenience. Thank you.



To: Daron Hall, City Manager
From: Jay Byers, Deputy City Manager
Date: January 6, 2025
Subject: Designation of Official Depositories

As you are aware, Kansas Statutes require that Official City Depositories be designated by formal Governing Body action, and it is the practice to designate these depositories each year following reorganization of the Board of Commissioners.

I recommend continuing with the facilities we are currently using. These are BMO Harris Bank, Community National Bank, Commerce Bank, Equity Bank, GNBank, Labette Bank, Arvest Bank, Landmark National Bank and US Bank.

Please place an item on the agenda for the City Commission Meeting of January 14th, 2025, designating these banking institutions as Official City Depositories.

I will be available to answer any questions at your convenience.

Thank you.



Memorandum

TO: Daron Hall, City Manager

FROM: Blake Benson, Economic Development Director

DATE: January 7, 2025

SUBJECT: January 14, 2025 Agenda Item
Pinamonti Physical Therapy quitclaim deed

Pinamonti Physical Therapy, P.A., was approved for an Industrial Revenue Bond (IRB) to support its 2015 expansion. The IRB carried with it a property tax exemption for eight years (length of the abatement was predicated on the company's amount of investment).

State guidelines dictate that the property be deeded to the City for the length of the abatement period. Now that the abatement period has ended, the attached municipal quitclaim deed will place the property back in the name of Pinamonti Physical Therapy, P.A.

Please place this item on the agenda for the city commission meeting scheduled for Tuesday, January 14, 2025. Action being requested is approval of the municipal quitclaim deed.

MUNICIPAL QUIT CLAIM DEED

On this ____ day of January, 2025, the City of Pittsburg, Kansas, a municipal corporation, (“Grantor”) Quitclaims to Pinamonti Physical Therapy, P.A., (“Grantee”) its interest in the following described real estate in Crawford County, Kansas:

Tract I: Lots Numbered Five (5), Six (6) EXCEPT the EAST TEN (10) feet of Lot Six (6) and the South Half (S ½) of Lot Number Nine (9) in Mount Carmel Place Addition (Crawford County, Kansas), according to the recorded Plat thereof.

Tract II: The East Ten (10) feet of Lot Number Six (6) and all of Lot Number Seven (7) in Mount Carmel Place Addition (Crawford County, Kansas), according to the recorded Plat thereof.

for the sum of One Dollar (\$1.00) and other good and valuable consideration.

EXCEPT AND SUBJECT TO: Easements and rights-of-way of record, including the Mortgage from Pinamonti Physical Therapy, PA to University Bank, dated September 18, 2013 and recorded September 19, 2013 in Miscellaneous Record 611 at page 14 in the office of the Register of Deeds of Crawford County, Kansas, and the Mortgage from Pinamonti Physical Therapy, PA, to Mid-America, Inc. dated May 12, 2014 and recorded May 27, 2014 in Miscellaneous Record 614 at page 87 in the office of the Register of Deeds of Crawford County, Kansas, as assigned to the U.S. Small Business Administration by instrument recorded in Miscellaneous Record 615 at page 716 in the office of the Register of Deeds of Crawford County, Kansas.

THE CITY OF PITTSBURG, KANSAS

By: _____
Mayor, Dawn McNay

ATTEST:

City Clerk, Tammy Nagel

STATE OF KANSAS)
) ss:
CRAWFORD COUNTY)

BE IT REMEMBERED, that on this ____ day of January, 2025, before me, the undersigned, a Notary Public, in and for the County and State aforesaid, came Dawn McNay, Mayor of the City of Pittsburg, Kansas, a Municipal corporation duly incorporated and existing under and by virtue of the laws of Kansas; and Tammy Nagel, City Clerk of said City, who are personally known to me to be the same persons who executed as such officers the within instruments of writing on behalf of said City and such person duly acknowledged the execution of the same to be the act and deed of said City.

IN TESTIMONY WHEREOF, I have hereunto set my hand and affixed my Notarial Seal, the day and year last above written.

Notary Public

My Appointment Expires: _____

79-1437e. (a) The real estate sales validation questionnaire required by this act shall not apply to transfers of title: (2) made solely for the purpose of securing or releasing security for a debt or other obligation.

Interoffice Memorandum

TO: Daron Hall

FROM: Dexter Neisler, Director of Property and Sanitation

DATE: January 8, 2025

Subject: Approval of purchase of refuse containers

I am writing this to request approval from the commission to authorize \$45,502.34 for the purchase of poly carts.

I kindly request that this matter be included on the agenda for the upcoming January 14th, 2025 commission meeting. The actions to be considered include waiving of the City's formal bid process and approving future purchases of refuse containers.

Dexter Neisler

Director of Property and Sanitation

City of Pittsburg, KS 66762

620-230-5517

Dexter.neisler@pittks.org



3100 West 76th Street
 Davenport, IA 52806
 Ph: 563-391-4840

Elliott Sanitation Equip. Co.
 1245 Dawes Avenue
 Lincoln, NE 68521
 Ph: 402-474-4840

Quote

Date	Quote #
1/6/2025	22299
Proposed Shipping Date	
Approx. 2-3 weeks ARO	
Terms	
Net 30	
Rep	
KMH	

4000 SE Beisser Drive
 Grimes, IA 50111
 Ph: 515-986-4840
 Fx: 515-986-9530

14219 Norby Road
 Grandview, MO 64030
 Ph: 816-761-4840

4400 E 60th Ave
 Commerce City, CO 80022
 Ph: 303-853-4840

City of Pittsburg
 201 West 4th St.
 PO Box 688
 Pittsburg, KS 66762

Here is our quotation on the goods named, subject to the conditions noted:

CONDITIONS: The prices and terms on this quotation are not subject to verbal changes or other agreements unless approved in writing by the Home Office of the Seller. Prices are based on costs and conditions existing on date of quotation and are subject to change by the Seller before final acceptance. All quotations and agreements are contingent upon strikes, accidents, fires, availability of materials and all other causes beyond our control.

Typographical and stenographic errors subject to correction. Purchaser agrees to accept either overage or shortage not in excess of ten percent to be charged for pro-rata. Purchaser assumes liability for patent and copyright infringement when goods are made to Purchaser's specifications. When quotation specifies material to be furnished by the purchaser, ample allowance must be made for reasonable spoilage and material must be of suitable quality to facilitate efficient production. Quoted Prices are good for 60 days.

Conditions not specifically stated herein shall be governed by established trade customs. Terms inconsistent with those stated herein which may appear on Purchaser's formal order will not be binding on the Seller.

TERMS: Equipment is due on receipt. Carts, Containers, Parts & service are Net 30 unless otherwise noted on your account. Balances over 30 days from the date of invoice are subject to finance charges up to 1.5% per month.

Qty	Item	Description	Price	Total
793	USD95Q.Gray	Schaefer Model USD95Q 95 gallon cart with 10" wheels, Charcoal Gray body, black lid. Hot stamp on file. Includes freight.	57.38	45,502.34

Total \$45,502.34

TO CONFIRM ORDER, SIGN AND RETURN

X _____



PITTSBURG LAND BANK


201 W 4th | PO Box 688

Pittsburg, KS 66762

P: (620) 230-5551

www.pittks.org

Interoffice Memorandum

To: Daron Hall, City Manager
CC: Tammy Nagel, City Clerk
From: Kim Froman, Director of Community Development & Housing (KF:dg) 
Date: January 8, 2025
Subject: Agenda Item – Appointment to Board of Trustees for the Pittsburg Land Bank

The Pittsburg Land Bank was established by ordinance during the May 12, 2015, City Commission meeting and is operated by a Board of Trustees. This Board contains representatives from the following categories: Legal Professional, Financial Professional, Real Estate Professional, Construction Professional, USD 250 Representative, Crawford County Representative, and an At-Large Representative.

The following nominations were received; please select 1 nominee from the following categories to serve a three-year term:

- Real Estate Professional:** Amy Loy Herring
- Construction Professional:** James Sukraw
- USD 250 Representative:** Ann Lee

In this regard, would you place this item on the agenda for the City Commission meeting scheduled for January 14, 2025.

Requested Action: For the Governing Body to approve or disapprove the appointment of Amy Loy Herring, Real Estate Professional; James Sukraw, Construction Professional; and Ann Lee, USD 250 Representative to the Land Bank Board of Trustees to serve three-year terms.

If you have any questions regarding this matter, please feel free to contact me at 620-230-5550.

Sincerely,

Kim Froman
Director of Community Development and Housing



RECEIVED

DEC 03 2024

Pittsburg City Clerk

Land Bank Board of Trustees

APPLICATION FOR APPOINTMENT

Note: Your application will be copied for the City Commission and made available to the press and public.

I am a current member seeking reappointment to the Board.

I am seeking a first term as a member of the Board.

Name: Amy Loy Herring

Home Address: 406 S Georgia, Pittsburg, KS 66762

Mailing Address: same as home

Occupation: Real Estate Agent

Business Address: 904 S Broadway, Pittsburg, KS 66762

Home Telephone: 620-687-1241

Business Telephone: 620-6-231-4370

E-mail: amyloyherring@yahoo.com

Are you a resident of Pittsburg? X If yes, how long have you lived in Pittsburg: 51 years

Current occupation (within last 12 months): Real Estate Agent

Business interest in the last 12 months: My family has been life long business owners in Pittsburg, starting with my Great Grandfather and currently my daughter.

Previous Committee/Commission Experience: I have no city or community committee experience.

Education/Experience: A resume may be attached containing this and any other information that would be helpful in evaluating your application. I attended PSU but did not graduate.

In 2007 I obtained my Real Estate license and have been active since. In 2022 I received my
broker license.

Professional and/or community service activities: I have been an active member of KCRAR
for several years, the last 3 I have been Pittsburg's chapter chair.

Please explain your reasons for wishing to serve on this committee/commission and how you feel that you may contribute: I believe it is our civic duty to serve the public and contribute to
the betterment of our community. Serving on a committee allows me to give back by applying my skills and
experiences to make a positive impact. I am committed to collaboration, thoughtful decision-making, and
ensuring that the committee's work benefits the greater good.

The Land Bank Board of Trustees meets at City Hall at 8:00 a.m. on the last Thursday of each month. Appointment to this position may require you to file a Conflict of Interest Disclosure Statement, which is a public record.

Signature of Applicant: *Amy Lay Stening*

Date: 12/2/24

If you have any questions regarding the appointment procedure, please contact the City Clerk by phone at (620)230-5532 or by email at tammy.nagel@pittks.org.

Please return your completed application by **Noon on December 3, 2024.**

Applications may be submitted:

1. By mail: The City of Pittsburg
Attn: City Clerk
PO Box 688
Pittsburg, Kansas 66762
2. In person at City Hall (201 West 4th Street), or
3. By email to tammy.nagel@pittks.org



Land Bank Board of Trustees

APPLICATION FOR APPOINTMENT

Note: Your application will be copied for the City Commission and made available to the press and public.

RECEIVED
DEC 07 2025
City of Pittsburg
Housing

RECEIVED
JAN 07 2025
City of Pittsburg
Housing

I am a current member seeking reappointment to the Board.

I am seeking a first term as a member of the Board.

Name: James Sukraw

Home Address: 989 Prairie View Lane Pittsburg KS 66762

Mailing Address: 989 Prairie View Lane

Occupation: Superintendent with Tri State Building

Business Address: 816 E Jefferson Pittsburg KS 66762

Home Telephone: (620) 249-6525

Business Telephone: (620) 249-6525

E-mail: james.sukraw@tristatebuilding.net

Are you a resident of Pittsburg? Y If yes, how long have you lived in Pittsburg: 42 years

Current occupation (within last 12 months): Superintendent with Tri State Building

Business interest in the last 12 months: N/A

Previous Committee/Commission Experience: USD 250 future planning committee before
the additions to all of the local schools.

Education/Experience: A resume may be attached containing this and any other information that would be helpful in evaluating your application. 29 years in the construction industry,
both commercial and residential.

Professional and/or community service activities: _____

Please explain your reasons for wishing to serve on this committee/commission and how you feel that you may contribute: I am very fond of Pittsburg and the SEK area. This is where i was
raised, and am raising my kids. With my experience in the construction industry i thought it would be a
good way to give back a little to the community that has given so much to me.

The Land Bank Board of Trustees meets at City Hall at 8:00 a.m. on the last Thursday of each month. Appointment to this position may require you to file a Conflict of Interest Disclosure Statement, which is a public record.

Signature of Applicant:  _____
Date: _____

If you have any questions regarding the appointment procedure, please contact the City Clerk by phone at (620)230-5532 or by email at tammy.nagel@pittks.org.

Please return your completed application by **Noon** on **January 7, 2025**.

Applications may be submitted:

1. By mail: The City of Pittsburg
Attn: City Clerk
PO Box 688
Pittsburg, Kansas 66762
2. In person at City Hall (201 West 4th Street), or
3. By email to tammy.nagel@pittks.org



RECEIVED

NOV 21 2024

City of Pittsburg
Housing

USD 250 Representative

Land Bank Board of Trustees

APPLICATION FOR APPOINTMENT

Note: Your application will be copied for the City Commission and made available to the press and public.

I am a current member seeking reappointment to the Board.

I am seeking a first term as a member of the Board.

Name: Ann Lee

Home Address: 1123 East Highway 126 Pittsburg, KS 66762

Mailing Address: Same

Occupation: Assistant Superintendent - Pittsburg Community Schools

Business Address: 510 Deill Street Pittsburg, KS 66762

Home Telephone: 620-704-6204

Business Telephone: 620-235-3100

E-mail: alee@usd250.org

Are you a resident of Pittsburg? No If yes, how long have you lived in Pittsburg: _____

Current occupation (within last 12 months): Same position.

Business interest in the last 12 months: I do not own a business.

Previous Committee/Commission Experience: I participated in the Land Bank Board of Trustees beginning in July of 2023 when I started my role as assistant superintendent. I do not have commission or city committee experience. I have been a part of a few focus groups for the city.

Education/Experience: A resume may be attached containing this and any other information that would be helpful in evaluating your application. See attached....

Professional and/or community service activities: United School Administrators, Kansas State Superintendent Association, Kiwanis, Salvation Army Board, and Land Bank.

Please explain your reasons for wishing to serve on this committee/commission and how you feel that you may contribute: I have a passion to serve the people of Pittsburg. During my time in Pittsburg, I become an advocate for our families and schools. The purpose of the Land Bank Board of Trustees is critical to the continued growth of our city.

The Land Bank Board of Trustees meets at City Hall at 8:00 a.m. on the last Thursday of each month. Appointment to this position may require you to file a Conflict of Interest Disclosure Statement, which is a public record.

Signature of Applicant: Ann Lee

Date: 11/20/24

If you have any questions regarding the appointment procedure, please contact the City Clerk by phone at (620)230-5532 or by email at tammy.nagel@pittks.org.

Please return your completed application by **Noon on November 20th, 2024.**

Applications may be submitted:

1. By mail: The City of Pittsburg
Attn: City Clerk
PO Box 688
Pittsburg, Kansas 66762
2. In person at City Hall (201 West 4th Street), or
3. By email to tammy.nagel@pittks.org

Margaret (Ann) Lee
1123 East Highway 126
Pittsburg, KS 66762
(620) 704-6204
alee@usd250.org

OBJECTIVE: Seeking a position on the City of Pittsburg's Land Bank Board of Trustees

EDUCATION: PITTSBURG STATE UNIVERSITY Pittsburg, KS

- Bachelor of Science in Education, Major in Elementary Education, Emphasis in Science. May 1997.
- Master of Science Degree, Major in Counseling, Emphasis in Elementary School. December 2001.
- Master of Science Degree, Major in Educational Leadership. May 2008.
- Specialist in Education, Major in Advanced Studies in Leadership. July 2014.

CERTIFICATION: KANSAS

District Leadership	K-12	Building Leadership	PreK-12
Elementary	K-9	School Counselor	K-9
General Science	5-9		

ORGANIZATION MEMBERSHIPS:	United School Administrators of Kansas	Pittsburg Land Bank Committee
	Kansas School Superintendent Association	Salvation Army Board Member
	Pittsburg State University's Leadership Studies Advisory Council	Kiwanis

AWARDS/ RECOGNITIONS: 5 Challenge Awards for Academic Improvement in 2017 and 2018, 2014 Pittsburg State University Department of Psychology and Counseling Outstanding Alumni, 2013 Clyde U. Phillips Distinguished Service Award

EXPERIENCE: **PITTSBURG COMMUNITY SCHOOLS** Pittsburg, KS
07/23-Current
Assistant Superintendent of Schools

- Coordinating the development of curriculum, instruction and assessment in the district. This includes: Conducting curriculum reviews and development sessions to revise and update curriculum, and coordinating the review of text book adoptions.
- Coordinating and monitoring district's assessments and reporting assessment results.
- Coordinating the plan and delivery of staff development that supports effective teaching and learning.
- Collaborating with our district's administrators and professional development committee to ensure we are planning and delivering meaningful professional development.
- Planning and Facilitating district mentoring program for 1st and 2nd year teachers as well as induction and orientation for new staff members,
- Coordinating the district's State and Federal programs. This includes writing applications, preparing and submitting reports to the state and board of education. Developing and managing budgets for all State and Federal programs.
- Supervising, evaluating, and mentoring buildings administrators.
- Coordinating the district's school improvement process. This includes the implementation of our Multi-Tiered System of Supports and School Accreditation Process.
- Participating in community committees to support the goals of Pittsburg Community Schools and represent our district within the community.

- 07/20-6/23
07/11-06/20
- Principal at Lakeside Elementary
Principal at Westside Elementary
- Supervising and evaluating both certified and classified staff members
 - Managing the building level budget, expenditures, and purchase orders
 - Analyzing data and facilitating discussions with staff to drive instructional decisions
 - Developing and facilitating building level professional learning communities, faculty meetings, and professional development
 - Developing business partnerships between the school, local businesses and churches
 - Facilitating the development and implementation of a building wide multi-tiered system of support in the areas of reading, math, and behavior
 - Member of the district leadership team and district negotiating team
- 07/09-6/11
- Assistant Principal at Pittsburg Community Middle School
- Supervised and evaluated both certified and classified staff members
 - Assisted in the development of a building wide multi-tiered system of support in the area of behavior and building-wide anti-bullying team
 - Co-Facilitated the development of an integrated improvement plan
 - Participated in a Kansas Learning Network site visit for Geary County School District
- 08/05-05/09
- School Counselor at George Nettels Elementary School
- Developed and presented classroom guidance lessons and behavior interventions for kindergarten through fifth grades while providing counseling sessions for students
 - Updated crisis manual and the student improvement team process for George Nettels Elementary
 - Chairperson for the Title 1 application committee, Multi-tiered System of Support Team and NCA Profile Committee
- 08/00-05/05
- JOPLIN R-VIII SCHOOLS** Joplin, MO
School Counselor at Kelsey Norman Elementary and Cecil Floyd Elementary
- Developed and presented classroom guidance lessons for kindergarten through fifth grades
 - Administered individualized intelligence tests, achievement tests and DIBELS
- 08/98-05/00
- Fifth Grade Teacher at Jefferson Elementary
- Developed daily lesson plans using various teaching techniques
 - Participated in curriculum planning committees, IEP meetings, Business Partner's Committee
- 08/97-05/98
- DADEVILLE R-II SCHOOLS** Dadeville, MO
Fifth Grade Teacher
- Developed daily lesson plans, maintained documentation, and resolved disciplinary issues
 - Developed curriculum and curriculum guides for fifth grade program
- ADDITIONAL INFORMATION:** Outside Visitation Team Member for Galena Schools, KEL1 Mentor for area assistant principal, Crisis Prevention Institute Trained, Instructor for the Department of Psychology and Counseling - Spring 2006

VENDOR SET: 99 City of Pittsburg, KS
 BANK: * ALL BANKS
 DATE RANGE: 12/09/2024 THRU 1/03/2025

VENDOR I.D.	NAME	STATUS	CHECK DATE	INVOICE AMOUNT	DISCOUNT	CHECK NO	CHECK STATUS	CHECK AMOUNT
C-CHECK	VOID CHECK	V	12/12/2024			196649		
C-CHECK	VOID CHECK	V	12/12/2024			196650		
C-CHECK	VOID CHECK	V	12/12/2024			196657		
C-CHECK	VOID CHECK	V	12/12/2024			196663		
C-CHECK	VOID CHECK	V	12/19/2024			196695		
C-CHECK	VOID CHECK	V	12/19/2024			196696		
C-CHECK	VOID CHECK	V	12/19/2024			196697		
C-CHECK	VOID CHECK	V	12/19/2024			196698		
C-CHECK	VOID CHECK	V	12/19/2024			196715		
C-CHECK	VOID CHECK	V	12/19/2024			196716		
C-CHECK	VOID CHECK	V	12/19/2024			196717		
C-CHECK	VOID CHECK	V	12/19/2024			196718		
C-CHECK	VOID CHECK	V	12/19/2024			196719		
C-CHECK	VOID CHECK	V	12/24/2024			196724		
C-CHECK	VOID CHECK	V	12/24/2024			196725		

* * T O T A L S * *	NO	INVOICE AMOUNT	DISCOUNTS	CHECK AMOUNT
REGULAR CHECKS:	0	0.00	0.00	0.00
HAND CHECKS:	0	0.00	0.00	0.00
DRAFTS:	0	0.00	0.00	0.00
EFT:	0	0.00	0.00	0.00
NON CHECKS:	0	0.00	0.00	0.00
VOID CHECKS:	15	VOID DEBITS 0.00		
		VOID CREDITS 0.00	0.00	0.00

TOTAL ERRORS: 0

VENDOR SET: 99 BANK:	TOTALS:	NO	INVOICE AMOUNT	DISCOUNTS	CHECK AMOUNT
		15	0.00	0.00	0.00
BANK:	TOTALS:	15	0.00	0.00	0.00

VENDOR SET: 99 City of Pittsburg, KS
 BANK: 80144 BMO HARRIS BANK
 DATE RANGE:12/09/2024 THRU 1/03/2025

VENDOR I.D.	NAME	STATUS	CHECK DATE	INVOICE AMOUNT	DISCOUNT	CHECK NO	CHECK STATUS	CHECK AMOUNT
0224	KDOR	D	12/24/2024			000000		15,901.53
3079	COMMERCE BANK	D	12/24/2024			000000		66,455.17
8211	UMB BANK N.A.	E	12/10/2024			024376		8,952.33
8236	NORTHGATE ASSOCIATES LLC	E	12/10/2024			024377		5,737.86
8775	PITTSBURG INVESTORS, LLC	E	12/10/2024			024378		15,914.94
0748	CONRAD FIRE EQUIPMENT	E	12/13/2024			024379		534.94
1478	KANSASLAND TIRE #1828	E	12/13/2024			024380		42.00
6528	GALE GROUP/CENGAGE	E	12/13/2024			024381		99.16
7791	C4 HOLDINGS LLC	E	12/13/2024			024382		393.50
7994	ASBELL TRUCKING INC	E	12/13/2024			024383		101,419.54
8236	NORTHGATE ASSOCIATES LLC	E	12/13/2024			024384		39,095.87
8250	DBT TRANSPORTATION LLC	E	12/13/2024			024385		20,931.00
8400	TK ELEVATOR CORPORATION	E	12/13/2024			024386		660.33
8467	WASTE CORPORATION OF KANSAS, L	E	12/13/2024			024387		5,901.23
8724	ASSURED PARTNERS CAPITAL, INC	E	12/13/2024			024388		3,750.00
8782	ED MILLER AUTO SUPPLY	E	12/13/2024			024389		683.91
8842	CARDS KS LLC	E	12/13/2024			024390		400.00
8882	FIRST RESPONDER OUTFITTERS, IN	E	12/13/2024			024391		422.47
8886	RED EQUIPMENT, LLC	E	12/13/2024			024392		259.51
8971	SEK ANIMAL ADVOCATES SOCIETY	E	12/13/2024			024393		600.00
9000	CELESTE R. BAKER	E	12/13/2024			024394		6,250.00
0046	ETTINGERS OFFICE SUPPLY	E	12/13/2024			024395		1,066.82

VENDOR SET: 99 City of Pittsburg, KS
 BANK: 80144 BMO HARRIS BANK
 DATE RANGE:12/09/2024 THRU 1/03/2025

VENDOR I.D.	NAME	STATUS	CHECK DATE	INVOICE AMOUNT	DISCOUNT	CHECK NO	CHECK STATUS	CHECK AMOUNT
0055	JOHN'S SPORT CENTER, INC.	E	12/13/2024			024396		414.99
0101	BUG-A-WAY INC	E	12/13/2024			024397		250.00
0112	MARRONES INC	E	12/13/2024			024398		2,268.01
0133	JIM RADELL CONSTRUCTION COMPAN	E	12/13/2024			024399		11,910.00
0207	PEPSI-COLA BOTTLING CO OF PITT	E	12/13/2024			024400		156.30
0276	JOE SMITH COMPANY, INC.	E	12/13/2024			024401		1,364.39
0317	KUNSHEK CHAT & COAL CO, INC.	E	12/13/2024			024402		2,142.57
0364	CRAWFORD COUNTY SHERIFF'S DEPA	E	12/13/2024			024403		3,750.00
0409	WISEMAN'S DISCOUNT TIRE INC	E	12/13/2024			024404		150.95
0412	NAN MCKAY & ASSOCIATES	E	12/13/2024			024405		478.00
0583	DICKINSON INDUSTRIES INC	E	12/13/2024			024406		34.82
0597	CORNEJO & SONS LLC	E	12/13/2024			024407		2,520.13
0726	PITTSBURG STATE UNIVERSITY	E	12/13/2024			024408		12,500.00
0746	CDL ELECTRIC COMPANY INC	E	12/13/2024			024409		13,583.01
1792	B&L WATERWORKS SUPPLY, LLC	E	12/13/2024			024410		1,931.56
2005	GALLS PARENT HOLDINGS, LLC	E	12/13/2024			024411		136.23
2825	STATE OF KANSAS	E	12/13/2024			024412		479.00
3126	W.W. GRAINGER, INC	E	12/13/2024			024413		97.02
3261	PITTSBURG AUTO GLASS	E	12/13/2024			024414		275.00
33571	LARRY'S DIESEL REPAIR LLC	E	12/13/2024			024415		14,259.88
3668	MID AMERICA PROPERTIES OF PITT	E	12/13/2024			024416		80.00
4307	HENRY KRAFT, INC.	E	12/13/2024			024417		187.21

VENDOR SET: 99 City of Pittsburg, KS
 BANK: 80144 BMO HARRIS BANK
 DATE RANGE:12/09/2024 THRU 1/03/2025

VENDOR I.D.	NAME	STATUS	CHECK DATE	INVOICE AMOUNT	DISCOUNT	CHECK NO	CHECK STATUS	CHECK AMOUNT
5014	MID-AMERICA SANITATION INC.	E	12/13/2024			024418		5,700.00
5420	AQUIONICS INC	E	12/13/2024			024419		1,489.19
5855	STERICYCLE, INC.	E	12/13/2024			024420		224.59
5931	VOGEL HEATING & COOLING INC	E	12/13/2024			024421		68.00
6103	ED MCCULLOUGH	E	12/13/2024			024422		80.00
6175	HENRY C MENGHINI	E	12/13/2024			024423		150.00
6209	MYTOWN MEDIA	E	12/13/2024			024424		166.67
6846	GREENWAY ELECTRIC, INC.	E	12/13/2024			024425		43,125.55
6851	SCHULTE SUPPLY INC	E	12/13/2024			024426		2,584.13
7023	BLEVINS ASPHALT CONSTRUCTION C	E	12/13/2024			024427		963.00
7038	SIGNET COFFEE ROASTERS	E	12/13/2024			024428		60.00
7127	UNIQUE MANAGEMENT SERVICES, IN	E	12/13/2024			024429		23.30
7240	JAY HATFIELD CERTIFIED USED CA	E	12/13/2024			024430		324.99
7407	LIMELIGHT MARKETING LLC	E	12/13/2024			024431		600.00
7620	POMP'S TIRE SERVICE INC	E	12/13/2024			024432		2,259.18
7629	EARLES ENGINEERING & INSPECTIO	E	12/13/2024			024433		32,117.48
7655	HW ACQUISITIONS, PA	E	12/13/2024			024434		308.40
7839	VISION SERVICE PLAN INSURANCE	E	12/13/2024			024435		2,266.40
8147	CHEM-AQUA, INC.	E	12/13/2024			024436		466.65
8206	LINDE INC	E	12/13/2024			024437		4,336.42
8649	UPLINK, LLC	E	12/13/2024			024438		27.00
8985	MARK CASTOR	E	12/13/2024			024439		10,900.00

VENDOR SET: 99 City of Pittsburg, KS

BANK: 80144 BMO HARRIS BANK

DATE RANGE:12/09/2024 THRU 1/03/2025

VENDOR I.D.	NAME	STATUS	CHECK DATE	INVOICE AMOUNT	DISCOUNT	CHECK NO	CHECK STATUS	CHECK AMOUNT
1478	KANSASLAND TIRE #1828	E	12/20/2024			024440		2,195.97
8232	BAYSINGERS POLICE SUPPLY INC	E	12/20/2024			024441		10,907.30
8467	WASTE CORPORATION OF KANSAS, L	E	12/20/2024			024442		704.45
8495	TAYLOR CORPORATION	E	12/20/2024			024443		79.81
8528	SARANN AUTO LEASING, INC.	E	12/20/2024			024444		2,040.00
8703	THE BLUE SPOON LLC	E	12/20/2024			024445		118.00
8708	NOTCH 8, LLC	E	12/20/2024			024446		21,278.53
8782	ED MILLER AUTO SUPPLY	E	12/20/2024			024447		739.06
8796	RAMAKER & ASSOCIATES, INC.	E	12/20/2024			024448		5,575.00
8914	ALL PRO LAWN CARE & SNOW REMOV	E	12/20/2024			024449		1,056.00
9001	ROCKWELL AUTOMATION INC	E	12/20/2024			024450		2,777.40
9002	RASMUSSEN AIR AND GAS ENERGY I	E	12/20/2024			024451		3,286.31
0046	ETTINGERS OFFICE SUPPLY	E	12/20/2024			024452		415.89
0054	JOPLIN SUPPLY COMPANY	E	12/20/2024			024453		2,403.84
0055	JOHN'S SPORT CENTER, INC.	E	12/20/2024			024454		199.98
0087	FORMS ONE, LLC	E	12/20/2024			024455		2,971.73
0133	JIM RADELL CONSTRUCTION COMPAN	E	12/20/2024			024456		8,128.00
0292	UNIFIRST CORPORATION	E	12/20/2024			024457		52.74
0317	KUNSHEK CHAT & COAL CO, INC.	E	12/20/2024			024458		3,614.20
0478	VIETTI AUTO BODY INC	E	12/20/2024			024459		575.00
0577	KANSAS GAS SERVICE	E	12/20/2024			024460		2,125.95
0779	PITTSBURG COMMUNITY THEATRE	E	12/20/2024			024461		6,467.46

VENDOR SET: 99 City of Pittsburg, KS

BANK: 80144 BMO HARRIS BANK

DATE RANGE:12/09/2024 THRU 1/03/2025

VENDOR I.D.	NAME	STATUS	CHECK DATE	INVOICE AMOUNT	DISCOUNT	CHECK NO	CHECK STATUS	CHECK AMOUNT
0844	HY-FLO EQUIPMENT CO., INC.	E	12/20/2024			024462		326.15
0866	AVFUEL CORPORATION	E	12/20/2024			024463		19,328.28
1792	B&L WATERWORKS SUPPLY, LLC	E	12/20/2024			024464		8,945.84
2005	GALLS PARENT HOLDINGS, LLC	E	12/20/2024			024465		104.74
2035	O'BRIEN ROCK CO., INC.	E	12/20/2024			024466		1,354.00
2186	PRODUCERS COOPERATIVE ASSOCIAT	E	12/20/2024			024467		2,249.26
2960	PACE ANALYTICAL SERVICES LLC	E	12/20/2024			024468		4,545.10
3668	MID AMERICA PROPERTIES OF PITT	E	12/20/2024			024469		3,938.33
5396	MIDWEST REGIONAL BALLET, LLC	E	12/20/2024			024470		14,906.93
5519	TOTAL ELECTRONICS CONTRACTING	E	12/20/2024			024471		152.50
6230	THE MAZUREK LAW OFFICE LLC	E	12/20/2024			024472		330.00
6402	BEAN'S TOWING & AUTO BODY	E	12/20/2024			024473		3,570.58
6464	PRO X PROPERTY SOLUTIONS, LLC	E	12/20/2024			024474		2,777.25
6851	SCHULTE SUPPLY INC	E	12/20/2024			024475		350.00
7620	POMP'S TIRE SERVICE INC	E	12/20/2024			024476		34.50
7629	EARLES ENGINEERING & INSPECTIO	E	12/20/2024			024477		44,336.00
8046	CONVERGEONE, INC.	E	12/20/2024			024478		7,755.75
8309	MISSISSIPPI LIME COMPANY	E	12/20/2024			024479		9,917.59
8312	LYLE T. WALTHALL	E	12/20/2024			024480		250.00
8605	WOODRIVER ENERGY LLC	E	12/20/2024			024481		2,733.04
8855	LEWIS BRISBOIS BISGAARD & SMIT	E	12/20/2024			024482		470.50
8960	STIFFLER, JOSHUA	E	12/20/2024			024483		3,455.00

VENDOR SET: 99 City of Pittsburg, KS
 BANK: 80144 BMO HARRIS BANK
 DATE RANGE:12/09/2024 THRU 1/03/2025

VENDOR I.D.	NAME	STATUS	CHECK DATE	INVOICE AMOUNT	DISCOUNT	CHECK NO	CHECK STATUS	CHECK AMOUNT
1478	KANSASLAND TIRE #1828	E	12/26/2024			024484		56.50
6528	GALE GROUP/CENGAGE	E	12/26/2024			024485		22.39
8202	PETROLEUM TRADERS CORPORATION	E	12/26/2024			024486		19,571.39
0038	LEAGUE OF KANSAS MUNICIPALITIE	E	12/26/2024			024487		200.00
0046	ETTINGERS OFFICE SUPPLY	E	12/26/2024			024488		236.16
0054	JOPLIN SUPPLY COMPANY	E	12/26/2024			024489		13,790.37
0055	JOHN'S SPORT CENTER, INC.	E	12/26/2024			024490		1,422.45
0101	BUG-A-WAY INC	E	12/26/2024			024491		30.00
0133	JIM RADELL CONSTRUCTION COMPAN	E	12/26/2024			024492		4,288.00
0335	CUSTOM AWARDS, LLC	E	12/26/2024			024493		1,742.00
0577	KANSAS GAS SERVICE	E	12/26/2024			024494		9,812.14
0597	CORNEJO & SONS LLC	E	12/26/2024			024495		305.75
0746	CDL ELECTRIC COMPANY INC	E	12/26/2024			024496		252.24
4307	HENRY KRAFT, INC.	E	12/26/2024			024497		204.45
5014	MID-AMERICA SANITATION INC.	E	12/26/2024			024498		288.94
5552	NATIONAL SIGN CO INC	E	12/26/2024			024499		1,139.10
5855	STERICYCLE, INC.	E	12/26/2024			024500		137.34
5883	SPROULS CONSTRUCTION INC	E	12/26/2024			024501		4,440.00
6851	SCHULTE SUPPLY INC	E	12/26/2024			024502		299.85
7427	OLSSON INC	E	12/26/2024			024503		1,128.39
7620	POMP'S TIRE SERVICE INC	E	12/26/2024			024504		2,573.74
0516	AMERICAN CONCRETE CO INC	R	12/12/2024			196646		467.00

VENDOR SET: 99 City of Pittsburg, KS
 BANK: 80144 BMO HARRIS BANK
 DATE RANGE:12/09/2024 THRU 1/03/2025

VENDOR I.D.	NAME	STATUS	CHECK DATE	INVOICE AMOUNT	DISCOUNT	CHECK NO	CHECK STATUS	CHECK AMOUNT
8475	AMERICAN LAWN & LANDSCAPE, INC	R	12/12/2024			196647		120.00
0523	AT&T	R	12/12/2024			196648		14,387.36
1	BELT, TERESA	R	12/12/2024			196651		90.00
5966	BERRY COMPANIES, INC.	R	12/12/2024			196652		160.34
8278	GERSON BOCANEGRA	R	12/12/2024			196653		75.00
1	BOLDRINI, SUSIE	R	12/12/2024			196654		957.50
1	BOLDRINI, SUSIE	R	12/12/2024			196655		1,404.00
5759	COMMUNITY HEALTH CENTER OF SEK	R	12/12/2024			196656		515.00
4263	COX COMMUNICATIONS KANSAS LLC	R	12/12/2024			196658		82.21
4263	COX COMMUNICATIONS KANSAS LLC	R	12/12/2024			196659		703.04
4263	COX COMMUNICATIONS KANSAS LLC	R	12/12/2024			196660		395.57
4263	COX COMMUNICATIONS KANSAS LLC	R	12/12/2024			196661		96.54
7517	CRAW-KAN TELEPHONE COOPERATIVE	R	12/12/2024			196662		1,999.95
0375	WICHITA WATER CONDITIONING	R	12/12/2024			196664		11.00
8430	EQUIPMENTSHARE.COM, INC	R	12/12/2024			196665		1,982.17
1108	EVERGY KANSAS CENTRAL INC	R	12/12/2024			196666		26,221.02
3251	FT SCOTT COMMUNITY COLLEGE	R	12/12/2024			196667		7,500.00
6809	RICHARD GILMORE	R	12/12/2024			196668		11,536.60
8935	CURTISS E & KRIS HEMBY	R	12/12/2024			196669		438.85
6923	HUGO'S INDUSTRIAL SUPPLY INC	R	12/12/2024			196670		44.86
2877	KDHE - BUREAU OF WATER	R	12/12/2024			196671		20.00
0226	KDOR LIQUOR TAX	R	12/12/2024			196672		44.74

VENDOR SET: 99 City of Pittsburg, KS
 BANK: 80144 BMO HARRIS BANK
 DATE RANGE: 12/09/2024 THRU 1/03/2025

VENDOR I.D.	NAME	STATUS	CHECK DATE	INVOICE AMOUNT	DISCOUNT	CHECK NO	CHECK STATUS	CHECK AMOUNT
6102	KANSAS LAW ENFORCEMENT TRAININ	R	12/12/2024			196673		30.00
0063	LOCKE WHOLESALE SUPPLY	R	12/12/2024			196674		21.90
8460	MARMIC FIRE AND SAFETY	R	12/12/2024			196675		1,607.32
8506	PITTSBURG PUBLISHING COMPANY L	R	12/12/2024			196676		182.07
8505	PITTSBURG PUBLISHING COMPANY,	R	12/12/2024			196677		535.15
8507	PITTSBURG PUBLISHING COMPANY,	R	12/12/2024			196678		275.00
0175	REGISTER OF DEEDS	R	12/12/2024			196679		55.00
6372	SATTERLEE MECHANICAL CONTRACTI	R	12/12/2024			196680		220.00
7576	SEK URGENT CARE, LLC	R	12/12/2024			196681		35.00
6377	SOUTHEAST KANSAS RECYCLING CEN	R	12/12/2024			196682		50.00
6260	TRANE	R	12/12/2024			196683		900.00
6809	RICHARD GILMORE	R	12/12/2024			196684		10,961.60
0497	CRAWFORD COUNTY DISTRICT COURT	R	12/17/2024			196686		36.00
6154	4 STATE MAINTENANCE SUPPLY INC	R	12/19/2024			196687		243.99
0516	AMERICAN CONCRETE CO INC	R	12/19/2024			196688		1,565.00
5966	BERRY COMPANIES, INC.	R	12/19/2024			196689		1,330.62
1	BRADLEY, MARILYN	R	12/19/2024			196690		350.00
1	CACAYORIN, CHERRY	R	12/19/2024			196691		200.00
4373	CHILDREN'S ADVOCACY CENTER	R	12/19/2024			196692		420.00
1	CRUZ, NALLELY	R	12/19/2024			196693		100.00
8791	ENTERPRISE FM TRUST	R	12/19/2024			196694		47,544.43
4636	EVERGY KANSAS CENTRAL INC. (HA	R	12/19/2024			196699		827.28

VENDOR SET: 99 City of Pittsburg, KS
 BANK: 80144 BMO HARRIS BANK
 DATE RANGE:12/09/2024 THRU 1/03/2025

VENDOR I.D.	NAME	STATUS	CHECK DATE	INVOICE AMOUNT	DISCOUNT	CHECK NO	CHECK STATUS	CHECK AMOUNT
0118	FED EX	R	12/19/2024			196700		8.78
1	HORTON'S PIZZA PLUS, INC	R	12/19/2024			196701		5,211.83
6923	HUGO'S INDUSTRIAL SUPPLY INC	R	12/19/2024			196702		515.00
7190	LEXISNEXIS RISK DATA MANAGEMEN	R	12/19/2024			196703		381.92
1	LOPEZ, ISABELLA	R	12/19/2024			196704		100.00
8460	MARMIC FIRE AND SAFETY	R	12/19/2024			196705		582.76
1	MERNITIEZ-GOMEZ, ANACAREN	R	12/19/2024			196706		100.00
8505	PITTSBURG PUBLISHING COMPANY,	R	12/19/2024			196707		218.93
8507	PITTSBURG PUBLISHING COMPANY,	R	12/19/2024			196708		459.50
1991	OFFICE OF STATE FIRE MARSHAL	R	12/19/2024			196709		150.00
7270	SECURITY 1ST TITLE, LLC	R	12/19/2024			196710		500.00
6702	APPLIED CONCEPTS INC	R	12/19/2024			196711		377.00
6260	TRANE	R	12/19/2024			196712		17,521.60
8657	VERIZON CONNECT FLEET USA LLC	R	12/19/2024			196713		1,129.82
5589	CELLCO PARTNERSHIP	R	12/19/2024			196714		14,857.22
1	VOWELL, RACHEL	R	12/19/2024			196720		250.00
5561	AT&T MOBILITY	R	12/24/2024			196721		149.45
7116	EMC INSURANCE COMPANIES	R	12/24/2024			196722		924.00
1108	EVERGY KANSAS CENTRAL INC	R	12/24/2024			196723		109,390.27
0118	FED EX	R	12/24/2024			196726		8.78
1	GREGORY, JOEL	R	12/24/2024			196727		9,965.00
1	HERNANDEZ-CANALES, CYNTHIA	R	12/24/2024			196728		61.00

VENDOR SET: 99 City of Pittsburg, KS

BANK: 80144 BMO HARRIS BANK

DATE RANGE:12/09/2024 THRU 1/03/2025

VENDOR I.D.	NAME	STATUS	CHECK DATE	INVOICE AMOUNT	DISCOUNT	CHECK NO	CHECK STATUS	CHECK AMOUNT
8377	LONGAN CONSTRUCTION COMPANY	R	12/24/2024			196729		1,250.00
8460	MARMIC FIRE AND SAFETY	R	12/24/2024			196730		589.99
8505	PITTSBURG PUBLISHING COMPANY,	R	12/24/2024			196731		69.50
1991	OFFICE OF STATE FIRE MARSHAL	R	12/24/2024			196732		30.00
8225	ALL TRAFFIC SOLUTIONS INC	R	1/03/2025			196753		3,000.00
0516	AMERICAN CONCRETE CO INC	R	1/03/2025			196754		382.50
3084	AM SOCIETY OF COMPOSERS, AUTHO	R	1/03/2025			196755		445.00
8700	BTC ATHLETICS	R	1/03/2025			196756		6,068.71
8277	MICHAEL K CARPINO	R	1/03/2025			196757		66,542.44
7422	CITY OF GIRARD	R	1/03/2025			196758		225.00
4263	COX COMMUNICATIONS KANSAS LLC	R	1/03/2025			196759		104.95
4263	COX COMMUNICATIONS KANSAS LLC	R	1/03/2025			196760		78.21
0375	WICHITA WATER CONDITIONING	R	1/03/2025			196761		18.00
7116	EMC INSURANCE COMPANIES	R	1/03/2025			196762		1,238.00
8430	EQUIPMENTSHARE.COM, INC	R	1/03/2025			196763		3,292.50
4636	EVERGY KANSAS CENTRAL INC. (HA	R	1/03/2025			196764		150.54
0118	FED EX	R	1/03/2025			196765		8.78
7680	IMA, INC.	R	1/03/2025			196766		9,375.00
6196	KANSAS MUNICIPAL JUDGES ASSOCI	R	1/03/2025			196767		25.00
6093	KANSAS MUNICIPAL UTILITIES, IN	R	1/03/2025			196768		2,008.00
7172	KANSAS NAHRO	R	1/03/2025			196769		175.00
7833	KPOA	R	1/03/2025			196770		1,410.00

VENDOR SET: 99 City of Pittsburg, KS
BANK: 80144 BMO HARRIS BANK
DATE RANGE:12/09/2024 THRU 1/03/2025

VENDOR I.D.	NAME	STATUS	CHECK DATE	INVOICE AMOUNT	DISCOUNT	CHECK NO	CHECK STATUS	CHECK AMOUNT
8460	MARMIC FIRE AND SAFETY	R	1/03/2025			196771		712.18
1	MILLERS PROFESSIONAL IMAGING	R	1/03/2025			196772		250.00
8506	PITTSBURG PUBLISHING COMPANY L	R	1/03/2025			196773		182.07
6372	SATTERLEE MECHANICAL CONTRACTI	R	1/03/2025			196774		11,604.00
7576	SEK URGENT CARE, LLC	R	1/03/2025			196775		35.00
6260	TRANE	R	1/03/2025			196776		900.00
5589	CELLCO PARTNERSHIP	R	1/03/2025			196777		97.69

* * T O T A L S * *	NO	INVOICE AMOUNT	DISCOUNTS	CHECK AMOUNT
REGULAR CHECKS:	96	409,874.03	0.00	409,874.03
HAND CHECKS:	0	0.00	0.00	0.00
DRAFTS:	2	82,356.70	0.00	82,356.70
EFT:	129	661,810.59	0.00	661,810.59
NON CHECKS:	0	0.00	0.00	0.00
VOID CHECKS:	0	VOID DEBITS 0.00		
		VOID CREDITS 0.00	0.00	0.00

TOTAL ERRORS: 0

VENDOR SET: 99	BANK: 80144	TOTALS:	NO	INVOICE AMOUNT	DISCOUNTS	CHECK AMOUNT
			227	1,154,041.32	0.00	1,154,041.32
BANK: 80144	TOTALS:		227	1,154,041.32	0.00	1,154,041.32
REPORT TOTALS:			227	1,154,041.32	0.00	1,154,041.32

Passed and Approved this 14th day of January, 2025.

Dawn McNay, Mayor

Attest:

Tammy Nagel, City Clerk

Interoffice Memorandum

To: Daron Hall, City Manager
CC: Tammy Nagel, City Clerk; Dexter Neisler, Zoning Administrator
From: DeAnna Goering, Secretary, Planning Commission/Board of Zoning Appeals
Date: December 18, 2024
Subject: Agenda Item – January 14, 2025
Conditional Use Permit – 1613 N Walnut

The Planning Commission/Board of Zoning Appeals, in its meeting of December 16, 2024, considered a request submitted by Jose R. Constanza for a conditional use at 1613 N Walnut to allow a church. After reviewing all evidence presented, the Planning Commission/Board of Zoning Appeals voted unanimously to recommend to the Governing Body **approval** of the request based on the following criteria:

Character of Neighborhood: This conditional use does not change the character of the neighborhood in any way.

Zoning and Nearby Property Use: This conditional use does not affect the use of any nearby property in any way.

Project Suitability for Proposed Use: This project is suitable for the proposed use as it does not change or affect any existing features including streets, drainage areas, or sanitary sewers.

Detrimental Affects to Nearby Properties: This conditional use will not pose any detrimental affects to any nearby properties.

Affects to Public Health, Safety, & Welfare: Public health, safety, and welfare will not be affected by this conditional use.

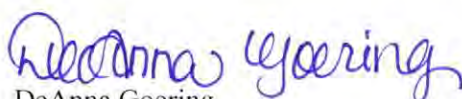
Staff Recommendation: Approve. This conditional use does not change or affect the character of the neighborhood.

In this regard, would you place this item on the agenda for the City Commission meeting scheduled for January 14, 2025.

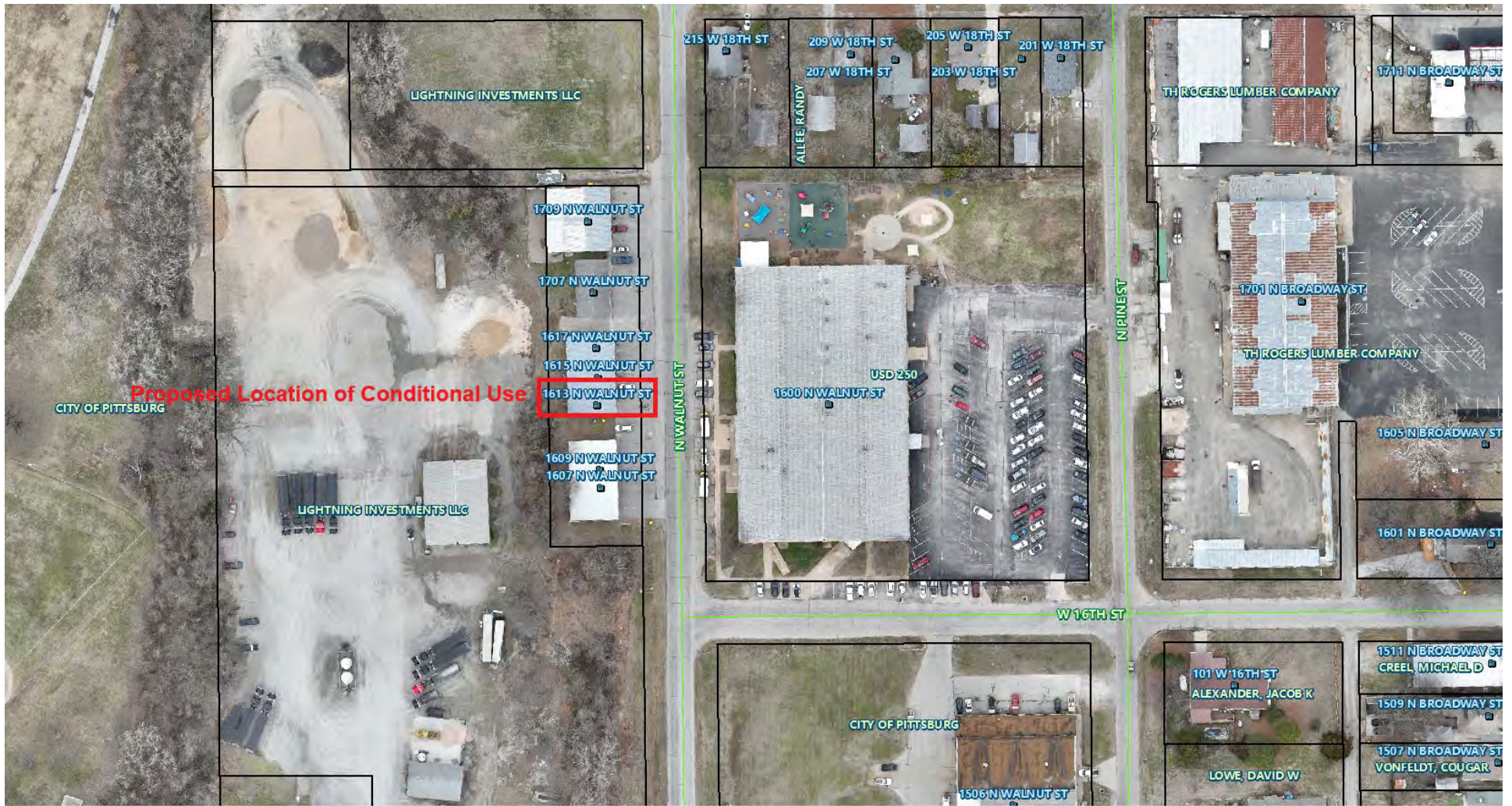
Requested Action: For the Governing Body to approve or disapprove the conditional use submitted by Jose R. Constanza. If the Governing Body disapproves the conditional use, they may, by a simple majority, deny the request for send it back to the Planning Commission/Board of Zoning Appeals for further consideration.

If you have any questions regarding this matter, please feel free to contact me at 620-230-5551.

Sincerely,



DeAnna Goering
Secretary, Planning Commission/Board of Zoning Appeals



Interoffice Memorandum

To: Daron Hall, City Manager
CC: Tammy Nagel, City Clerk; Dexter Neisler, Zoning Administrator
From: DeAnna Goering, Secretary, Planning Commission/Board of Zoning Appeals
Date: January 7, 2025
Subject: Agenda Item – January 14, 2025
Conditional Use Permit – 1609 Woodland Terrace

The Planning Commission/Board of Zoning Appeals, in its meeting of December 16, 2024, considered a request submitted by Sheena Kosman for a conditional use at 1609 Woodland Terrace to allow an in-home day care. After reviewing all evidence presented, including the attached petition, the Planning Commission/Board of Zoning Appeals voted 4-2-0 to recommend to the Governing Body **approval** of the request based on the following criteria:

Appeal: A written appeal was filed on December 31st, 2024, by Lynden Lawson, 1605 Woodland Terrace, and is attached.

Character of Neighborhood: This conditional use does not change the character of the neighborhood in any way.

Zoning and Nearby Property Use: This conditional use does not affect the use of any nearby property in any way.

Project Suitability for Proposed Use: This project is suitable for the proposed use as it does not change or affect any existing features including streets, drainage areas, or sanitary sewers.

Detrimental Affects to Nearby Properties: This conditional use will not pose any detrimental affects to any nearby properties.

Affects to Public Health, Safety, & Welfare: Public health, safety, and welfare will not be affected by this conditional use.

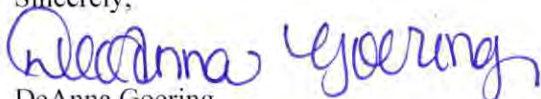
Staff Recommendation: Approve. This conditional use does not change or affect the character of the neighborhood. However, a written protest to the approval of the conditional use was received on December 31, 2024, and is attached.

In this regard, would you place this item on the agenda for the City Commission meeting scheduled for January 14, 2025.

Requested Action: For the Governing Body to approve or disapprove the conditional use submitted by Sheena Kosman. If the Governing Body disapproves the conditional use, they may, by a simple majority, deny the request or send it back to the Planning Commission/Board of Zoning Appeals for further consideration.

If you have any questions regarding this matter, please feel free to contact me at 620-230-5551.

Sincerely,



DeAnna Goering
Secretary, Planning Commission/Board of Zoning Appeals



Return Completed Application to:
Zoning Administrator
201 W 4th Street
Pittsburg, KS 66762

Case No.: 24-19
Date Filed: 10/31/2024
Date Paid: 10/31/24
Publication Date: 11/25/24
PC/BZA Date: 12/16/2024

[Handwritten initials]

Conditional Use Permit Application

Property Owner's Information

Name: Sheena Kosman
Address: 1609 Woodland Terrace Pittsburg, KS 66762
Phone: 417-321-2849 Email: shenana13@gmail.com

Applicant's Information

Name: Sheena Kosman
Address: 1609 Woodland Terrace Pittsburg, KS 66762
Phone: 417-321-2849 Email: shenana13@gmail.com

Property Information

Street Address of Affected Property: 1609 Woodland Terrace Pittsburg, KS 66762
Current Zone of Affected Property: R1A
Applicant's Interest in Property: I own this property.
Desired Use of Property: In home daycare.
Description of Submitted Plans (Plot Plan, Elevations, Etc): See drawing. All kids would remain in designated areas of home with supervision & necessary gates, fencing, locks, etc. All other rooms are blocked off. Large driveway for parking.
Legal Description of Property: Lot number Twenty Six (26) in Briarwood Addition, Crawford County, Kansas, according to the recorded Plat thereof.

RECEIVED

OCT 31 2024

City of Pittsburg
Housing

Owner's Certification

I/we acknowledge the receipt of the instruction packet explaining the method of submitting this application. I/we realize that this application cannot be processed unless it is completed in its entirety, is accompanied by all required supporting documentation as required in the instruction packet, and is accompanied by the appropriate, non-refundable fee.

I/we further certify that the foregoing information is true and correct to the best of my/our knowledge. If my/our request is granted, I/we will complete construction in accordance with plans submitted and approved by the Planning Commission/Board of Zoning Appeals (PC/BZA).

I/we authorize unannounced inspections of the subject property by City staff for the purpose of collecting information to review and analyze this request. I/we acknowledge that the PC/BZA and the Governing Body of the City of Pittsburg, Kansas, shall have authority to impose such conditions as it deems necessary in order to serve the public interest and welfare.

Shirley Kayman
Owner's Signature

10-28-24
Date

[Signature]
Owner's Signature

10-28-24
Date

This application must bear the signature(s) of the property owner(s). If an authorized agent signs on the owner's behalf, the agent shall sign his own name and attach the Owner Authorization form to this application.

RECEIVED

OCT 31 2024

City of Pittsburg
Housing

Office Use Only

Date Received: _____ Date Reviewed: _____

Approved Denied

Conditions of Approval/Reasons for Denial

Signature of Zoning Administrator

(seal)

September 10, 2024

KOSMAN, SHEENA
PLAY2LEARN CHILDCARE
1609 WOODLAND TER
PITTSBURG, KS 66762

PLAY2LEARN CHILDCARE

RECEIVED

OCT 10 2024

City of Pittsburg
Housing

RE: PLAN OF CORRECTION ACCEPTANCE FOR:

REFERENCE NUMBER: CR28P98

INSPECTION DATE: 09/05/2024

PLAY2LEARN CHILDCARE
1609 WOODLAND
PITTSBURG, KS 66762

We have received the Plan of Correction which you recently submitted to this office. The Plan of Correction for the above named facility is APPROVED.

If it is deemed necessary by our office, a revisit inspection may be scheduled to verify your progress of compliance activities. Please feel free to contact this office if you have questions or concerns regarding fire or life safety issues.

Sincerely,

Wyatt Delaney, Enforcement Inspector

Enforcement Section
cc: file

Kansas Department of Health and Environment

Temporary Permit

Family Child Care Home
Temporary Permit No. 0084320-001

Licensee: Sheena Leigh Ann Kosman

Facility: Play2Learn Childcare

Located at: 1609 Woodland Ter
Pittsburg, KS 66762

RECEIVED

OCT 10 2024

**City of Pittsburg
Housing**

In the county of: Crawford

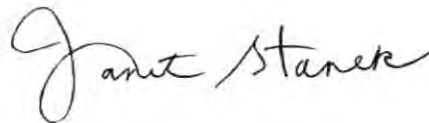
Having filed an application and having agreed to comply with the laws and regulations of the State of Kansas governing Family Child Care Homes, Sheena Leigh Ann Kosman is hereby authorized to care for

a maximum of 12 children under the capacities outlined in K.A.R. 28-4-114(e).

This Temporary Permit is effective 10/01/2024 and expires on 12/29/2024.

Smoking is prohibited inside the day care home during hours of operation.

** Local codes and ordinances may prescribe other requirements for the legal operation of this facility.



Janet Stanek, Secretary
Kansas Department of Health and Environment

Development Plan and Statement of Intent:

This would be an In-home childcare facility with 1 Provider (myself) to 10 kids (ages 2mo-12yrs) following KDHE regulations. I intend to use only the designated areas such as living room, dining room, kitchen area back yard and upstairs bathroom for daycare use. All other areas will be off limits and shut off by either locked doors or gated areas as described in layout. This childcare center will follow WIC guidelines by use of food program and complete the yearly inspections per childcare inspector. Hours of operations would be 7:30-5 Mon-Thur and 7:30-4 Friday unless agreed upon with parents and provider on hourly changes. This home has a large driveway that multiple cars can park in at a time as to not interfere with neighbors or street parking. This home has been inspected by Fire Marshall of Topeka, KS and passed all necessary codes and regulations. This provider will work with surveyor regularly to ensure all appropriate needs and safety is met for children.

I have attached multiple pages including boundary maps of property, layout of facility with descriptions and this statement of attempt.

Thank you,
Sheena Kosman

RECEIVED

OCT 31 2024

City of Pittsburg
Housing

SUPERVISION PLAN

Living Room/Dining Room/Entry way- These rooms are also considered the playroom as they are conjoined, and Supervision can take place easily and safely between rooms. The living room will serve as the nap room as well between the times of 1pm and 3pm for any kids that require a nap. For older kids, they may venture into dining room for arts and crafts or sit quietly on couch or floor and rest or read. There will be a monitor on at all times in these rooms for further supervision when Provider is not able to be present in room. Diaper changing will also be conducted in this room, following Safe Diaper procedures.

Kitchen- Provider will cook meals in the kitchen while any child under age 2.5 remain in the same room. There will be a designated safe area with a toddler table and highchair for the kids to sit while waiting on meals. Any older kids may sit at dining room table while waiting or remain in living room, with Provider checking on every 10-15 minutes with monitor also present with Provider. Gates will remain up keeping kitchen blocked off during hours outside of mealtimes.

Bathroom (Upstairs, accessible)- Any child under the age of 5 will have consistent supervision while in bathroom. Any child above that age will be checked on frequently (every 5-10 minutes) to ensure safety and appropriate hygiene is taking place. When Provider is upstairs attending to the children, monitor will be present, and all infants will remain in a safe space. For ex: crib, gated area, baby seat or swing away from danger until Provider can be present. Any child not an infant but under the age of 5 may continue to play in dining room/living area. Routine checks will be conducted every 5-10 min or less using monitor as well as listening for any abnormal behaviors/sounds, for ex: excessive crying, eerily quiet, excessive movement, etc.

Outdoors- All children should use restroom or receive diaper change prior to going outside to prevent the need to come back inside early. Outdoor play will remain in back yard with privacy fence to ensure safety of all kids in care. Gate will be shut with latch sealed at all times. If in the case a child has to use restroom or receive diaper change, every child under the age of 5 will go inside with Provider. If older than 5 and deemed trustworthy by Provider, child may remain outside and within hearing and visual field. If an older child who is deemed competent and trustworthy to use bathroom on own has to run inside they may do so but if not back outside within 5-10 minutes time, children and Provider will go back inside to ensure child is safe. Ongoing safety education and communication will be provided to all children to ensure understanding and following of guidelines take place.

Bathroom #2 UPSTAIRS and Bathroom #3 DOWNSTAIRS -Not accessible.

Bedrooms (3) UPSTAIRS and Bedroom (1) DOWNSTAIRS - Not accessible.

Family Room/Laundry room DOWNSTAIRS- Not accessible.

RECEIVED

OCT 31 2024

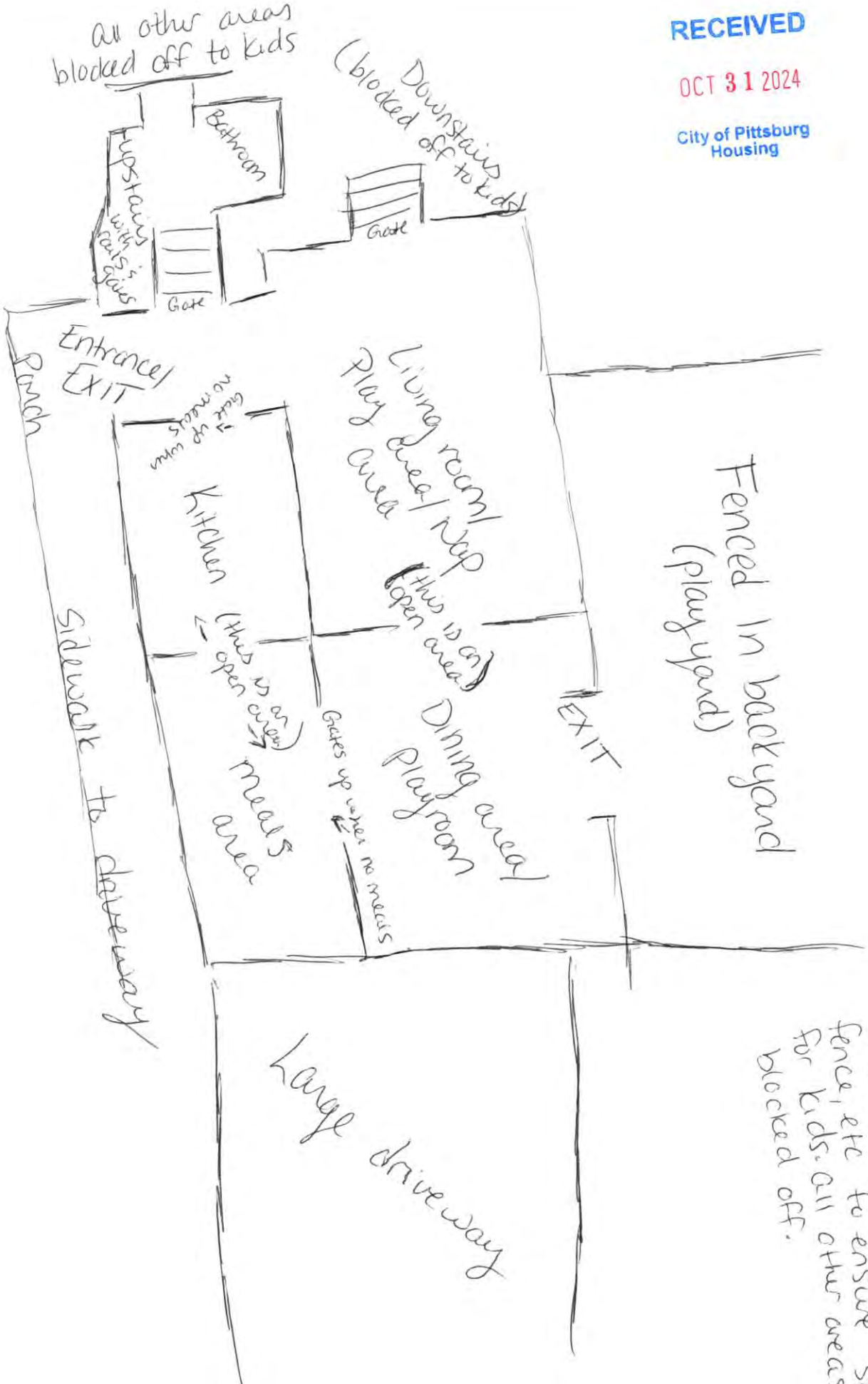
City of Pittsburgh
Housing

RECEIVED

OCT 31 2024

City of Pittsburg
Housing

Description of Submitted Plans



NOTE: Kids would remain in designated safe areas as listed, all areas have gates, fence, etc to ensure safety for kids. All other areas are blocked off.

RECEIVED

OCT 31 2024

City of Pittsburg
Housing

(THIS FORM MUST BE FILLED OUT TO ACCOMPANY ALL VARIANCE APPLICATIONS MADE TO THE BOARD OF ZONING APPEALS AND ALL REZONING AND CONDITIONAL USE APPLICATIONS MADE TO THE PLANNING AND ZONING COMMISSION and ALL CITIES)

Prepared for: Sheena Kosman

The following are the names and addresses of all persons owning property within 200 feet of the outside boundary of the property for which the request is being made:

Lot Number Twenty Six (26) in Briarwood Addition, Crawford County, Kansas, according to the recorded Plat thereof.

Nicholas & Sheena Kosman	1609 Woodland Terrace Pittsburg, KS 66762
Allison Lathim	1513 Woodland Drive, Pittsburg KS 66762
Michael & Olivia K Grosdidier	1515 Woodland Drive, Pittsburg KS 66762
Belview Capital Investments LLC	1416 Bear Run, Keller, TX 76248-5706
Jeffery R. & Rachel L. Trezona	1718 College Terrace, Pittsburg, KS 66762
David & Kimberly Michelle Froman	1603 Woodland Terrace Pittsburg, KS 66762
Lynden & Kirstin L. Lawson	1605 Woodland Terrace Pittsburg, KS 66762
Bethany N & Steven C. Enoch	1607 Woodland Terrace Pittsburg, KS 66762
Kenneth R and Kimberly N. Wood	1516 Woodland Terrace Pittsburg, KS 66762
Gerry G. Dennett & Vicki S. Dennett	1514 Woodland Terrace Pittsburg, KS 66762
Kenneth R. Agee, Patricia J. Agee, Laura J. Agee	1717 College Terrace Pittsburg, KS 66762
Joel E. Gregory, Victoria J. Gregory & Kristine Allyson Gregory (x3)	1606 Woodland Terrace Pittsburg, KS 66762
Dennis F. & Kathy R. Ferraro	1805 College Terrace Pittsburg, KS 66762
Jason C. & Tammy K. Grotheer	1801 College Terrace Pittsburg, KS 66762
Brian M. & Taylor Gorman	1608 Woodland Terrace Pittsburg, KS 66762

RECEIVED

OCT 31 2024

City of Pittsburg
Housing

Heather D. Burns

1610 Woodland Terrace
Pittsburg, KS 66762

Pedro J. Bravo-Elizondo &
Judy A. Berry-Bravo

1612 Woodland Terrace
Pittsburg, KS 66762

Done at Girard, Kansas this 29th day of October, 2024.

THE CRAWFORD COUNTY ABSTRACT COMPANY, INC.

By David J. Saia
David J. Saia, President

24-19: Conditional Use- Kosman- 1609 Woodland Terrace

DEC 5 2024

City of Pittsburgh Housing

From: The concerned Property owners in the Briarwood Addition

To: Dexter Neisler, The Planning Commission/Board of Zoning Appeals of the City of Pittsburgh

Subj: Written/Petition in opposition to Variance of Residence for Day Care at 1609 Woodland Terrace

Ref: Letter sent by the Planning Commission/Board of Zoning dated November 14,2024

Dear Sir,

The following property owners in this Briarwood Addition and are in opposition to the request for a variance at this residence. Those in opposition have signed this petition below:

Name	Address	Signature
+ Lynden Lawson	1605 Woodland Terr.	
+ Kirstin Lawson	1605 Woodland Terr.	
+ Brian Gorman	1608 Woodland Terr.	
+ Taylor Gorman	1608 Woodland Terr.	
+ John Minton	1513 Woodland Terr.	
+ Amanda Minton	1513 Woodland Terr.	
+ Joel Gregori	1606 Woodland Terr.	
+ Kenneth R Wood	1516 Woodland Drive	
+ Kimberly N Wood	1516 Woodland Drive	
+ Chris Ward	1515 Woodland Dr.	
+ Allison Lathin	1513 Woodland Dr.	
+ Rachel Trezona	1718 College Terrace	
+ Jesse Trezona	1718 College Terrace	
+ Ken Agee	1717 College Terr	
+ Kristine Gregory	1803 College Ter.	
+ Courtney Flynn	1604 Woodland Terr	

Gorman emailed to remove their names

+ : indicates a Property Owner within the 200' notification boundary area

GOERING, DEANNA

From: NEISLER, DEXTER W.
Sent: Friday, December 20, 2024 8:08 AM
To: GOERING, DEANNA
Cc: NAGEL, TAMMY N
Subject: Fw: Rescind petition signature

DeAnna,

Can you please attach this to the memo for the January 14 Commission meeting.

Dexter Neisler

Director of Property and Sanitation
City of Pittsburg, KS 66762
620-230-5517
Dexter.neisler@pittks.org



From: Brian Gorman <b_gorman22@hotmail.com>
Sent: Thursday, December 19, 2024 1:11 PM
To: NEISLER, DEXTER W. <DEXTER.NEISLER@pittks.org>
Subject: Rescind petition signature

*****EXTERNAL*****

This is an EXTERNAL EMAIL. Stop and think before clicking a link, opening attachments or entering credentials.

Dexter,

Per our conversation on the phone, my wife Taylor Gorman and I would like to rescind our objection to the in-home daycare wanting to start up on Woodland Terrace. After learning more from the meeting this week, this is no longer an issue for us. Thank you.

From: Jim Hoskins <jimdhoskins@aol.com>
Date: December 9, 2024 at 8:16:38 AM MST
To: Dexter.neisler@pittks.gov
Subject: Zoning variance

Dexter, Per our phone conversation:
Commissioners,

My wife and I recently were notified that a request to change zoning for 1609 Woodland Terr., Pittsburg, KS. , to allow for a child care operation, will be before the commission this week for consideration.

We will not be able to attend the meeting but want to voice our opposition to the request for variance.

Our neighborhood has experienced increased street parking, on Woodland Dr., immediately across the street east of the proposed location. The addition of multiple drop offs daily, we feel, will make the street less safe and endanger the children that already play in the driveways and street. There are already occasions when other neighbors park a vehicle or trailer, overnight, the street narrows and visibility becomes impaired.

Jim Hoskins
Barbara Hoskins

City of Pittsburg, Kansas
Planning Commission/Board of Zoning Appeals
Municipal Court Room, Law Enforcement Center
December 16, 2024 | 5:30 pm

Members Present: Martin Dickinson, Mike Hanika, Derek Heikes, Laura Klusener,
Leah Posterick, Steve Scott, Mike Wilber

City Staff: Kim Froman, DeAnna Goering, Dexter Neisler

- I. Call to Order
 - a. Meeting called to order at 5:30 PM
 - b. Chairperson Dickinson led the flag salute
- II. Consider the Following:
 - a. Approval of Minutes
 - i. Consider the approval of the November Meeting Minutes (November 25, 2024)
 1. Motion: Approve November Minutes (Klusener)
 - a. Motion: Seconded (Wilber)
 - b. Motion: Carried, 7-0-0
- III. Recognition of Outgoing Board Members
 - a. Outgoing Board Members Laura Klusener and Leah Posterick were recognized for their service to the Planning Commission/Board of Zoning Appeals.
- IV. Public Hearings
 - a. Case No. 24-18 – Conditional Use – Constanza – 1613 N Walnut
 - i. Following Public Hearing, at which no one appeared in support and no one appeared in opposition, on the motion of Wilber, seconded by Posterick, the Planning Commission/Board of Zoning Appeals approved the request submitted by Jose R. Constanza for a conditional use permit at 1613 N Walnut to allow for a church.
 1. Motion: Carried, 7-0-0
 - b. Case No. 24-19 – Conditional Use – Kosman – 1609 Woodland Terrace
 - i. Following Public Hearing at which 5 persons appeared in support and 7 persons appeared in opposition, on the motion of Hanika, seconded by Wilber, the Planning Commission/Board of Zoning Appeals approved the request submitted by Sheena Kosman for a conditional use permit at 1609 Woodland Terrace to allow an in-home daycare, with the following conditions:
 1. The hours of operation shall be between 7:30 am and 5:30 pm, Monday through Thursday, and 7:30 am to 4:00 pm on Fridays.
 - a. Motion: Carried, 4-2-0 (Klusener absent)

- V. Site Plans (No Public Hearing)
 - a. Case No. 24-22 – Site Plan – CHCSEK – 201 S Rouse
 - i. Case No. 24-22 was pulled from the agenda by applicant.
- VI. Non-Agenda Reports & Requests
 - a. 2025-2026 Planning Commission/Board of Zoning Appeals Meeting Schedule
 - i. On the motion of Scott, seconded by Hanika, the Planning Commission/Board of Zoning Appeals approved the 2025-2026 Meeting Schedule.
 - 1. Motion: Carried, 6-0-0 (Klusener Absent)
- VII. Adjournment
 - a. Motion: Adjourn the regular meeting of the Planning Commission/Board of Zoning Appeals. (Posterick)
 - i. Motion: Seconded (Scott)
 - ii. Motion: Carried, 6-0-0 (Klusener Absent)
 - b. Meeting adjourned at 06:35 pm

Martin Dickinson, Chairperson

ATTEST:

DeAnna Goering, Secretary

UNOFFICIAL

From: Lynden Lawson, 1605 Woodland Terrace

To: Dexter Neisler, The Planning Commission/Board of Zoning Appeals of the City of Pittsburg

Subj: Written Protest in opposition to Variance granted by Planning Committee Board of Appeals in the case of Residence for Day Care at 1609 Woodland Terrace

Ref: 23-106 Appeals of Planning Commission Action on Development Plans

Dear Sir,

This is the written protest of the decision by the Planning Commission / Board of Appeals decision to grant a variance for the residence of 1609 Woodland Terrace.

Several items brought up by residences were not discussed/deliberated by the board when rendering a decision.

1. The **neighborhood** had twenty-two signatures against granting the variance and apparently had no weight when deciding the outcome except by two board members.
2. All questions brought up by these citizens were not answered satisfactorily, however, some were.
3. A medical issue brought up by a neighbor of the property spoke about how loud noises affect his wife's injury were not deliberated by the board.
4. The applicant requesting the variance at this residence in question had a vicious dog that escaped and was aggressive to neighbor **kids** and this didn't even get the board to ask any questions if the applicants still owned this dangerous dog.
5. There were some concerns addressed by the committee such as needed questions of what the applicant had on their Facebook and other account advertising a 24 hour day care.

Respectfully Submitted,

Lynden Lawson

RECEIVED

DEC 31 2024

**City of Pittsburg
Housing**

To: Daron Hall, City Manager

From: Jay Byers, Deputy City Manager

Date: January 7, 2025

Subject: Washington Pre-School Bids

At a previous City Commission meeting, bids for the preschool portion of the Washington School were presented for approval. The City Commission voted 2-2 to accept the bids and the motion therefore failed. The reason given by those opposed was to wait until all the bids were in before approving the ones that had been received. The remaining bids for the preschool section of the Washington School project have been received.

The preschool facility financing included CDBG funding and therefore required additional steps. The overall project is being done through the Point Forward community development organization, but as the formal recipient of the CDBG funds, the City must be involved in and follow CDBG-required bidding processes.

There have been three rounds of bidding required to get complete bids for the project. Following conversations with our grant administrators and CDBG staff, specific trade areas were successfully bid, and the preschool portion of the project can commence. It is important that these bids be approved to avoid further delays to the preschool construction.

CDBG requires that the Mayor sign a letter stating that single bids were received and asking the Department of Commerce for approval.

Please place on the City Commission agenda for January 14, 2025, the acceptance of bids for the Washington School preschool facility included in the attached document and asking the Mayor to sign the letter to DoC.

Washington School Successful Bid Responses

<u>Cost Code</u>	<u>Description</u>	<u>Bid</u>	<u>Contractor</u>
01-0610	Progress Cleaning, Rough Carpentry, Soffits & Siding	\$ 172,500.00	Wilson Builders
01-0607	Final Cleaning, Finish Carpentry, Specialty Supplies	\$ 35,500.00	Wilson Builders
03-0505	Building Concrete	\$ 70,650.00	JT Construction
06-0505	Supply Wood Trusses	\$ 23,400.00	Missouri Truss Co
07-0009	Insulation Gypsum Board & Ceilings	\$ 70,645.00	Wilson Builders
07-3000_	Roofing	\$ 55,732.00	Mid-America Roofing
09-2800_	Flooring & Tile	\$ 50,716.26	Star Commercial Flooring
09-7000_	Interior and Exterior Painting	\$ 26,189.00	Painting Plus
08-1000	Supply Doors and Door Hardware	\$ 16,300.00	Integrated Openings
08-4000	Supply Commercial Glass and Doors	\$ 12,978.00	Commercial Glass & Metals
08-0153	Supply Windows	\$ 35,593.00	Commercial Glass & Metals
04-0000	Masonry	\$ 82,000.00	Lusker Masonry
21-0000	Fire Suppression System	\$ 85,500.00	Fire Protection Servicers
22-0000	Plumbing	\$ 141,300.00	CDL Electric Co
23-0000	HVAC	\$ 103,145.00	CDL Electric Co
26-0000	Electrical-Wiring and Fixtures	\$ 99,400.00	Layne Electric
27-0000	Communications-Life Safety and Low Voltage Electronics	\$ 68,615.00	Uplink



January 14, 2025

Ginny Eardley
CDBG Project Manager
1000 SW Jackson St., Suite100
Topeka, KS 66612-1354
RE: Approval of Single Bids for Pittsburg 23-PF-026

Dear Ms. Eardley,

The City of Pittsburg completed three bid openings for the Non-Profit Childcare Project that took place on July 29, 2024, August 23, 2024, and January 2, 2025. Multiple scopes received single bids.

The single bids are as follows:

- Lusker Masonry (Masonry)- \$82,000
- CDL (plumbing) - \$141,300
- CDL (HVAC) - \$103,145
- Uplink (security)- \$68,615
- Missouri Truss (supply only) - \$23,400
- JT Construction (Concrete) - \$70,650
- Fire Protection Servicrs (Fire Suppression) - \$85,500.00
- Painting Plus (Interior & Exterior Painting) - \$ 26,189.00
- Star Commercial Flooring (Flooring & Tile) - \$50,716.26
- Wilson Builders INC. (final scope packages) - \$278,645

The construction budget for the project is \$1,691,016 (\$728,000 in CDBG funds, \$963,016 in local funds).

The Invitation for Bids was published in The Morning Sun on June 27, 2024, August 1, 2024, and December 17, 2024. The grant administrator emailed the Invitation for Bids to five MBE, WBE, and DBE companies. It was posted on Smartbid, Planhub, or by request to Vecino, the architect. As a reminder, KDC pre-approved Wilson Builders Inc. to bid on the remaining scopes in the third round of bidding.

We respectfully request the Kansas Department of Commerce's approval of the single bids.

Dawn McNay,
Mayor

Interoffice Memorandum

To: Daron Hall, City Manager
CC: Tammy Nagel, City Clerk
From: Kim Froman, Director of Community Development & Housing
Date: January 8, 2025
Subject: Agenda Item – Appointment to the Neighborhood Advisory Council

The Neighborhood Advisory Council (NAC) was established by ordinance during the July 11, 2023 City Commission meeting. The NAC is composed of twelve members representing all four quadrants of the City of Pittsburg. Equal membership from each of the four quadrants is preferred, but not mandatory. The members of the NAC are citizens with vested interest in their surrounding area who want to make improvements, create relationships with neighbors, and support the needs of the defined neighborhood area. Two members of the NAC were unable to fulfill their term and need to be replaced.

The following applications were received; please select (1) candidate from the following categories to serve each of the unexpired terms:

Northeast Quadrant (Select 1)	Jean Hurlbert Cathy Kinkaid Robert Murnan
Southeast Quadrant (Select 1)	Chad Comeau Erin Jordan Julie Laverack Tim Markel Larry Wayne Miller

In this regard, would you place this item on the agenda for the City Commission meeting scheduled for January 14, 2025.

Requested Action: For the Governing Body to select (1) new member to represent the Northeast Quadrant and select (1) new member to represent the Southeast Quadrant and fulfill the unexpired terms.

Sincerely,

Kim Froman
Director of Community Development and Housing



RECEIVED

OCT 04 2024

Pittsburg City Clerk

Neighborhood Advisory Council (NAC)

APPLICATION FOR APPOINTMENT

Note: Your application will be copied for the City Commission and made available to the press and public

I am seeking to fill an unexpired term on the Council.

Name: CHAD Comeau

Home Address: 808 Elmwood Ln.

Home/Cell Phone: 620-719-9794

Current Occupation: Owner Comeau Jewelry Co.

Work Address: 525 S. BROADWAY

Work Telephone: 620-231-2530

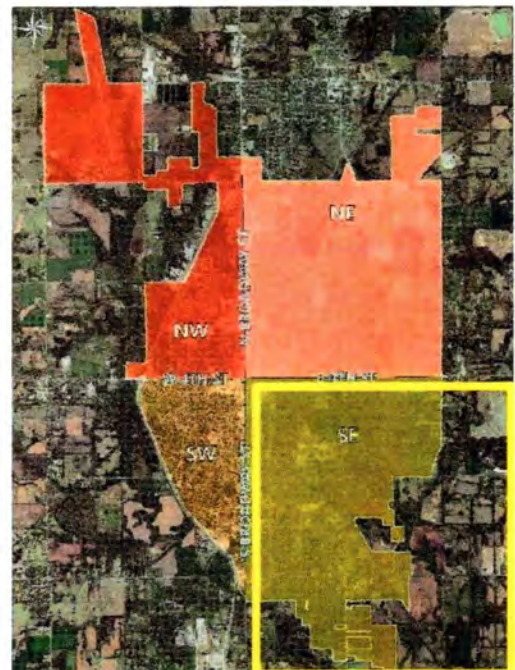
E-mail: comeaujewelry@gmail.com

Are you a resident of Pittsburg? yes

If yes, how long have you lived in Pittsburg: 23 yrs

Do you: Rent Own

This Application is for representatives living in the **Southeast Quadrant** (South of 4th Street, and East of Broadway Street). See map for quadrant boundaries.



Previous Committee/Commission Experience:

None

Education/Experience: A resume may be attached containing this and any other information that would be helpful in evaluating your application.

Professional and/or community service activities:

OWN BUSINESS 23 YEARS IN SE GUARD.

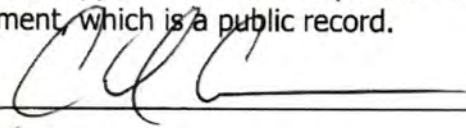
Please explain your reasons for wishing to serve on this council and how you feel that you may contribute:

I ENJOY MAINTAINING PRIDE IN MY PROPERTY AND AM WILLING TO TRY TO ENCOURAGE OTHERS.

Area of interest (please check any/all that may apply):

- Volunteerism
- Public Policy
- Communication
- Clean Up Efforts
- Neighborhood Coordination
- Event Planning

The Neighborhood Advisory Council meets at Memorial Auditorium at 12:00 pm on the first Wednesday of each month. Appointment to this position may require you to file a Conflict of Interest Disclosure Statement, which is a public record.

Signature of Applicant: 

Date: 10/4/24

If you have any questions regarding the appointment procedure, please contact the City Clerk by phone at (620) 230-5532 or by email at tammy.nagel@pittks.org.

Please return your completed application to:
City of Pittsburg
Attn: City Clerk
PO Box 688
Pittsburg, KS 66762

Neighborhood Advisory Council (NAC)

APPLICATION FOR APPOINTMENT

Note: Your application will be copied for the City Commission and made available to the press and public

I am seeking to fill an unexpired term on the Council.

Name: Jean Hurlbert

Home Address: 1007 E. 9th St. Pittsburg KS 66762

Home/Cell Phone: 620-404-9263

Current Occupation: Retired

Work Address: "

Work Telephone: "

E-mail: Jean.hurlbert9263@gmail.com

Are you a resident of Pittsburg? yes

If yes, how long have you lived in Pittsburg: 1995

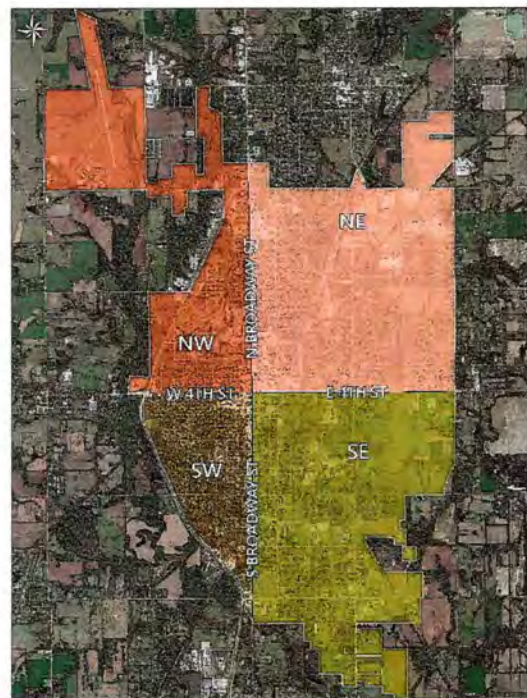
Do you: Rent ___ Own x

This application is for those living in the **Northeast Quadrant** or the **Southeast Quadrant** of the city. Select the quadrant you represent:

Northeast Quadrant (North of 4th Street and East of Broadway Street)

Southeast Quadrant (South of 4th Street and East of Broadway Street)

See map for quadrant boundaries.





RECEIVED

OCT 03 2024

Pittsburg City Clerk

Neighborhood Advisory Council (NAC)

APPLICATION FOR APPOINTMENT

Note: Your application will be copied for the City Commission and made available to the press and public

I am seeking to fill an unexpired term on the Council.

Name: Erin Jordan

Home Address: 2404 Knollview St

Home/Cell Phone: 620-423-7488

Current Occupation: Professor

Work Address: PSU

Work Telephone: _____

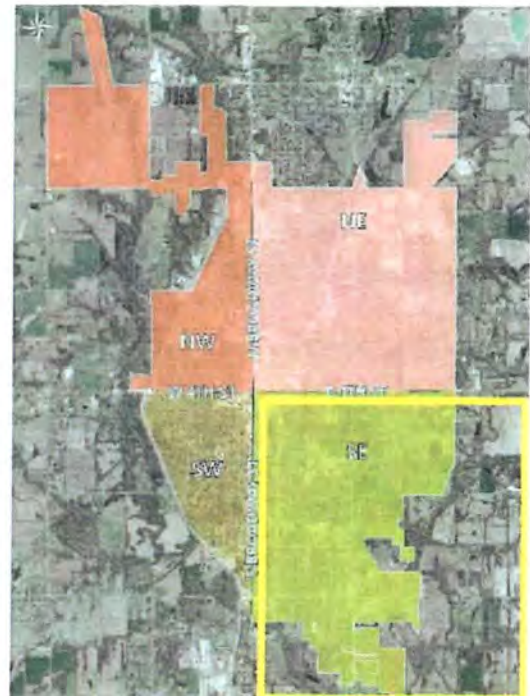
E-mail: obrien_05@hotmail.com

Are you a resident of Pittsburg? yes

If yes, how long have you lived in Pittsburg: 18 yrs

Do you: Rent Own

This Application is for representatives living in the **Southeast Quadrant** (South of 4th Street, and East of Broadway Street). See map for quadrant boundaries.



Previous Committee/Commission Experience:

member and president of SEK National Association of Women in Construction. Lots of committees at the college. Committees for everything.

Education/Experience: A resume may be attached containing this and any other information that would be helpful in evaluating your application.

See attached

Professional and/or community service activities:

Was once a member of Mother to Mother ministries. Current member of the National Association of Women in Construction. Former president of SEK NAWIC. Faculty sponsor for the PSU student chapter of NAWIC and we work with Girls scouts every year.

Please explain your reasons for wishing to serve on this council and how you feel that you may contribute:

I have been looking for an opportunity to become more involved in the community. This seems like a perfect fit.

Area of interest (please check any/all that may apply):

- Volunteerism Public Policy Communication
- Clean Up Efforts Neighborhood Coordination Event Planning

The Neighborhood Advisory Council meets at Memorial Auditorium at 12:00 pm on the first Wednesday of each month. Appointment to this position may require you to file a Conflict of Interest Disclosure Statement, which is a public record.

Signature of Applicant: *Tammy Nagel*

Date: 10/3/24

If you have any questions regarding the appointment procedure, please contact the City Clerk by phone at (620) 230-5532 or by email at tammy.nagel@pittks.org.

Please return your completed application to:
City of Pittsburg
Attn: City Clerk
PO Box 688
Pittsburg, KS 66762

Erin Jordan

EDUCATION

- December 2011 **Pittsburg State University** Pittsburg, KS
Master of Engineering Technology
▪ **Emphasis:** Construction
- May 2009 **Pittsburg State University** Pittsburg, KS
Bachelor of Science in Engineering Technology
▪ **Major:** Construction Engineering
▪ **Minor:** Business Administration

WORK EXPERIENCE

- Pittsburg State University** Pittsburg, KS
August 2022 – Present
Assistant Professor
▪ Teach 4-5 classes a semester. Classes include Construction Graphics, Construction Industry, Theory of Structures, Estimating I, and Gorilla Gateway.
▪ Faculty sponsor for Pittsburg State University's NAWIC Student Chapter.
▪ Attend recruitment events.
▪ Tour prospective students.
▪ Advise 20+ students.
▪ Attend professional workshops and seminars.
▪ Write technical content for new software.
▪ Create online technical content for classes on Canvas.
▪ Change classes/assignments as needed to be relevant with the construction industry.
- Self** Pittsburg, KS
December 2021 – Present
Designer/Drafter
▪ Complete plan sets for:
▪ Roadway improvement drawings
▪ House remodels
▪ New housing
- Neal Group Construction** Joplin, MO
May 2023-August 2023
Estimating/Project Management Consultant
▪ Calculated quantities and labor for historical renovation projects in downtown Joplin.
▪ Solicited bids from subcontractors.
▪ Created scopes of work.
▪ Rebuilt estimating and project management excel sheets.
▪ Researched new management platform.
▪ Trained company to use chosen management software.

Pittsburg State University
August 2016 – May 2022

Pittsburg, KS

Instructor

- Teach 4-5 classes a semester. Classes include Construction Graphics, Construction Industry, Theory of Structures, Estimating I, and Gorilla Gateway.
- Faculty sponsor for Pittsburg State University's NAWIC Student Chapter.
- Oversee the Math/AutoCAD Success Center.
- Attend recruitment events.
- Tour prospective students.
- Advise 20+ students.
- Attend professional workshops and seminars.
- Write technical content for new software.
- Create online technical content for classes on Canvas.
- Change classes/assignments as needed to be relevant with the construction industry.

Celltron

Galena, KS

May 2015 – August 2016

Engineer (At Home)

- Write technical instructions for building cable for manufacturing process.
- Interpret engineering drawings and code specifications for instructions and parts lists.
- Update old manufacturing instructions to match new format.
- Create production aids for process workers.

Neosho County Community College

Pittsburg, KS

August 2014 – May 2016

Adjunct Instructor – Intermediate Algebra

- Create daily notes, lesson plans, assignments, and tests.
- Keep grades and assignments up-to-date for PSU and NCCC using Canvas and Blackboard.
- Be available to students 24/7 via email and phone.
- Accept full responsibility for classroom and student management.
- Assess and redirect as necessary.
- Help students reach their goals with individualized achievement plans.

Celltron

Galena, KS

January 2012 – June 2013

Engineer

- Write technical instructions for building cable for manufacturing process
- Interpret engineering drawings and code specifications to write instructions and create parts lists.
- Update old manufacturing instructions to match new format.
- Adjust build as needed during production.
- Create production aids for process workers.
- Solve problems during manufacturing involving materials and specifications.
- Write up non-conforming parts for re-work.
- Manage daily Work in Progress report.
- Communicate with customers for clarifications.

Pittsburg State University

Pittsburg, KS

August 2010 – December 2011

Graduate Assistant

- Assist instructors inside and outside of the classroom.
- Work on assigned Revit projects.
- Tutor students on AutoCAD, Revit, and Excel as needed by appointment or office hours.
- Create daily lesson plans.

Empire District Electric

Joplin, MO

June 2009 – August 2010

Drafting Technician

- Prepare drawings of engineered structures and location maps for construction.
- Organize small projects and keep within budget.
- Enhance filing system by organizing new and old drawings by date and cataloguing titles.
- Verify locates for projects, if necessary field check locates.
- Write detailed steps to get to assets not easily located on a map.
- Resolve issues and maintain efficiency by meeting with subcontractors and vendors.
- Create spreadsheets to effectively access critical information relating to various assets in the company.

JEDunn Construction

Kansas City, MO

May 2008 – August 2008

Estimator Intern

- Assist Senior Estimator with daily activities by creating quantity takeoffs, preparing maps and visual aids.
- Complete quantity takeoffs for small projects such as out buildings, parking lots, and light fixtures
- Create buildings in 3D software in order to quantify large projects, such as seven-story hospitals
- Assist in bid-day activities by contacting possible bidders and sending out bid invitations
- Prepare paperwork for Project Manager



RECEIVED

JAN 06 2025

Pittsburg City Clerk

Neighborhood Advisory Council (NAC)

APPLICATION FOR APPOINTMENT

Note: Your application will be copied for the City Commission and made available to the press and public

I am seeking to fill an unexpired term on the Council.

Name: Cathy Kinkaid

Home Address: 920 E. 8th St

Home/Cell Phone: 620-249-7813

Current Occupation: RETIRED

Work Address: NA

Work Telephone: NA

E-mail: Kinkaid.Cathy@gmail (All lowercase)

Are you a resident of Pittsburg? yes

If yes, how long have you lived in Pittsburg: 24 yrs

Do you: Rent ___ Own X

This application is for those living in the **Northeast Quadrant** or the **Southeast Quadrant** of the city. Select the quadrant you represent:

Northeast Quadrant (North of 4th Street and East of Broadway Street)

Southeast Quadrant (South of 4th Street and East of Broadway Street)

See map for quadrant boundaries.



Previous Committee/Commission Experience:

District Council women for Quadrant (NE)

Education/Experience: A resume may be attached containing this and any other information that would be helpful in evaluating your application.

College Degree, Community Business

Professional and/or community service activities:

Please explain your reasons for wishing to serve on this council and how you feel that you may contribute:

to contribute in finding adequate and reasonable solutions to growing homeless population in Pittsburg

Area of interest (please check any/all that may apply):

- Volunteerism
- Public Policy
- Communication
- Clean Up Efforts
- Neighborhood Coordination
- Event Planning

The Neighborhood Advisory Council meets at Memorial Auditorium at 12:00 pm on the first Wednesday of each month. Appointment to this position may require you to file a Conflict of Interest Disclosure Statement, which is a public record.

Signature of Applicant: Aathy Kirkland

Date: 1/6/2025

If you have any questions regarding the appointment procedure, please contact the City Clerk by phone at (620) 230-5532 or by email at tammy.nagel@pittks.org.

Please return your completed application to:

City of Pittsburg
Attn: City Clerk
PO Box 688
Pittsburg, KS 66762



RECEIVED

OCT 21 2024

Pittsburg City Clerk

Neighborhood Advisory Council (NAC)

APPLICATION FOR APPOINTMENT

Note: Your application will be copied for the City Commission and made available to the press and public

I am seeking to fill an unexpired term on the Council.

Name: Julie Laverack

Home Address: 1314 Cedar Crest Drive

Home/Cell Phone: 620-249-6503

Current Occupation: Patient Education and Support Manager, CHC/SEK

Work Address: 3011 N. Michigan, Pittsburg

Work Telephone: 620-231-9873 ext 1132 E-mail: jlaverack@chcsek.org

Are you a resident of Pittsburg? Yes

If yes, how long have you lived in Pittsburg: 47 years

Do you: Rent Own X

This Application is for representatives living in the **Southeast Quadrant** (South of 4th Street, and East of Broadway Street). See map for quadrant boundaries.



Previous Committee/Commission Experience:

Crawford County Community Coalition: Vice Chair-since 2021
Crawford County Early Childhood Committee: Chair-since 2019
Southeast Kansas Diaper Stock-CoChair-since 2019
Kansas Maternal and Child Health Advisory Council-member since 2023

Education/Experience: A resume may be attached containing this and any other information that would be helpful in evaluating your application.

Bachelor's in Education from Pittsburg State University 2002
Master's in Education from Pittsburg State university 2004

Professional and/or community service activities:

Coordinate The Week of the Young Child in April-a week-long celebration of the young child held throughout the community
Serve as Educational Advocate for three foster children in our community
Coordinate the Crawford County Community Baby Shower in September with area partner agencies
Coordinate the Fairy Godmother Boutique-an event providing free prom dresses to all area students attending prom.


Please explain your reasons for wishing to serve on this council and how you feel that you may contribute:

I believe that when we all work together towards a common goal, we can create a happier and healthier community. Pittsburg has been my home for my entire life and I have raised my child here. I plan on growing old and retiring with my husband in our hometown-Pittsburg.

Area of interest (please check any/all that may apply):

- Volunteerism Public Policy Communication
- Clean Up Efforts Neighborhood Coordination Event Planning

The Neighborhood Advisory Council meets at Memorial Auditorium at 12:00 pm on the first Wednesday of each month. Appointment to this position may require you to file a Conflict of Interest Disclosure Statement, which is a public record.

Signature of Applicant: 

Date: 10/19/24

If you have any questions regarding the appointment procedure, please contact the City Clerk by phone at (620) 230-5532 or by email at tammy.nagel@pittks.org.

Please return your completed application to:
City of Pittsburg
Attn: City Clerk
PO Box 688
Pittsburg, KS 66762



RECEIVED

OCT 04 2024

Pittsburg City Clerk

Neighborhood Advisory Council (NAC)

APPLICATION FOR APPOINTMENT

Note: Your application will be copied for the City Commission and made available to the press and public

I am seeking to fill an unexpired term on the Council.

Name: Tim Markel

Home Address: 3505 Lyons ct

Home/Cell Phone: 7205763292

Current Occupation: Director - Operations

Work Address: 2000 16th st mall Denver, CO 80212

Work Telephone: 7205763292

E-mail: t.mark21@hotmail.com

Are you a resident of Pittsburg? Yes

If yes, how long have you lived in Pittsburg: 3 years

Do you: Rent Own

This Application is for representatives living in the **Southeast Quadrant** (South of 4th Street, and East of Broadway Street). See map for quadrant boundaries.



Previous Committee/Commission Experience:

None

Education/Experience: A resume may be attached containing this and any other information that would be helpful in evaluating your application.

Refer to Resume

Professional and/or community service activities:

Refer to Resume

Please explain your reasons for wishing to serve on this council and how you feel that you may contribute:

Desire to help shape a positive experience for our community and to learn about and be more involved in making impactful decisions to serve the interests of our community at large.

Area of interest (please check any/all that may apply):

- | | | |
|--|---|---|
| <input type="checkbox"/> Volunteerism | <input checked="" type="checkbox"/> Public Policy | <input checked="" type="checkbox"/> Communication |
| <input checked="" type="checkbox"/> Clean Up Efforts | <input checked="" type="checkbox"/> Neighborhood Coordination | <input type="checkbox"/> Event Planning |

The Neighborhood Advisory Council meets at Memorial Auditorium at 12:00 pm on the first Wednesday of each month. Appointment to this position may require you to file a Conflict of Interest Disclosure Statement, which is a public record.

Signature of Applicant: _____

Date: _____

If you have any questions regarding the appointment procedure, please contact the City Clerk by phone at (620) 230-5532 or by email at tammy.nagel@pittks.org.

Please return your completed application to:
City of Pittsburg
Attn: City Clerk
PO Box 688

Tim Markel

Leader in Operations and Analytics



(720) 576 - 3292



t.mark21@hotmail.com



Linkedin.com/in/tim-m-b71137a1

SKILLS & CERTIFICATIONS



Lean/SixSigma Certification



New Team Structure/Design



Process Standardization



Change Management



Catalyst for Improvement

EDUCATION

BA | International Business
Benedictine College
2006 – 2010

Basic SQL Coursework
DataCamp
2020 – 2021

ABOUT ME

Accomplished and results-driven leader offering 10+ years of experience in both technology and healthcare environments with a focus on operations, analytics and business process effectiveness. Quality focused and dedicated to providing efficient solutions in the areas of team productivity, organization, cost structuring, communications, training, collaboration, data insights, and program management.

EXPERIENCE

Director | Sr. Manager | Manager
DaVita | 2018- Current

As a Director at DaVita, I am responsible for creating sustainable teams & processes that deliver results against our core business programs. In one such instance, I helped build a brand new operations team to achieve and sustain our best clinical ratings in five years (+7% from prior year)

- Active program management and leadership of operations and data/analytics teams tracking toward success in CMS programs
- Modeling of reporting plans & management processes that bring KPI's to key stakeholders to celebrate success and/or improve performance where outliers exist
- Accountable for overall program success and delivering results against multi-year objectives as defined by, and engaging directly with, executive leadership

Manager | Supervisor | Sr. Technician
Comcast | 2011- 2018

As a Manager at Comcast I acted as a primary source of new work development and process effectiveness, employing Lean/SixSigma methodologies to ensure efficient operation at project inception

- Managed the Customer Security Assurance (CSA) operations and analyst teams that consisted of ~100 FTE and 200+ vendor agents across several locations.
- Assessed cost and staffing requirements for both new and existing programs to develop budget, personnel, and other resources to support process launch and sustainability.
- Continuously monitored to adjust process, staff, and data as needed based on stakeholder feedback, reporting metrics, and program health controls.

APPENDIX

Director – Clinical Transformation Program Management at DaVita (2021 – Present)

- Active program management over participation in various new innovation models from CMS
- Manage process to understand lengthy government program models that define KPI's which will dictate success in program performance
- Model (or manage modeling of) reporting plans & management (operational) processes that bring KPI's to key stakeholders to celebrate success and/or improve performance where outliers exist
- Accountable for overall program success and delivering results against multi-year objectives as defined by, and engaging directly with, executive leadership

Sr. Manager – Clinical Enterprise Operations & Analytics at DaVita (2020 – 2021)

- Continued high level management of operations team along with analytics team responsibilities and data management
- Manage data modeling for all facilities across DaVita to forecast performance in three government mandated Medicare programs.
- Oversee compilation of monthly reporting on forecasted performance via Anaplan, Tableau and Excel
- Routine stakeholder engagement and training on technical aspects and scoring methodology for each of the three programs

Manager – Clinical Enterprise Operations at DaVita (2018 – 2020)

- Built and lead brand-new team of one supervisor along with group of 12 data integrity specialists to take data entry from ~80% reporting to 98%
- Within one year, improved clinical five-star ratings by ~7% as a result of accurate and timely reporting
- Focused on building consistent and repeatable processes to ensure productivity and process standardization across team.
- Effectively maintained relationships with business partners in our clinical operations to educate on new processes and ensure proper application across all ~2,800 facilities.
- Took on new projects outside initial team scope to provide additional value to clinical operations and process standardization.

Manager – Operations & Program Management at Comcast (2016 – 2018)

- Managed new and existing end to end project/process design, coordination and implementation.
- Engaged with stakeholders to identify opportunities for new business while managing and meeting existing project deadlines.
- Created program efficiencies through the DMAIC process while utilizing Lean/SixSigma methodologies to ensure quality and consistency in application.
- Managed team of supervisors responsible for leading diverse mix of technicians, contractors, analysts, and engineers in a fast-paced environment.
- Ensured departmental goals and SLA's were met within acceptable timeframes.
- Managed engineering team supporting on-call 24/7 coverage of highly critical or sensitive security issues

APPENDIX

Supervisor – Operations at Comcast (2012 – 2016)

- Managed group of 12-15 technicians, working high priority internal and external projects and escalations, and often engaging with external teams for resolution.
- Interviewed and hired potential candidates as needed for departmental growth and attrition.
- Developed and delivered onboarding and ongoing trainings. Acted as a real time resource for team members as well as an active guide in day-to-day job functions and career growth.
- Tracked performance metrics and met with employees on a weekly basis to either reinforce quality metrics or create a plan of action to improve performance that did not meet current goals.
- Delivered corrective action when needed based on employee performance or behavioral concerns.

Neighborhood Advisory Council (NAC)

APPLICATION FOR APPOINTMENT

Note: Your application will be copied for the City Commission and made available to the press and public

I am seeking to fill an unexpired term on the Council.

Name: LARRY WAYNE MILLER

Home Address: 1209 Imperial Dr, Pittsburg KS

Home/Cell Phone: 620-240-3578

Current Occupation: Retired

Work Address: N.A.

Work Telephone: N.A.

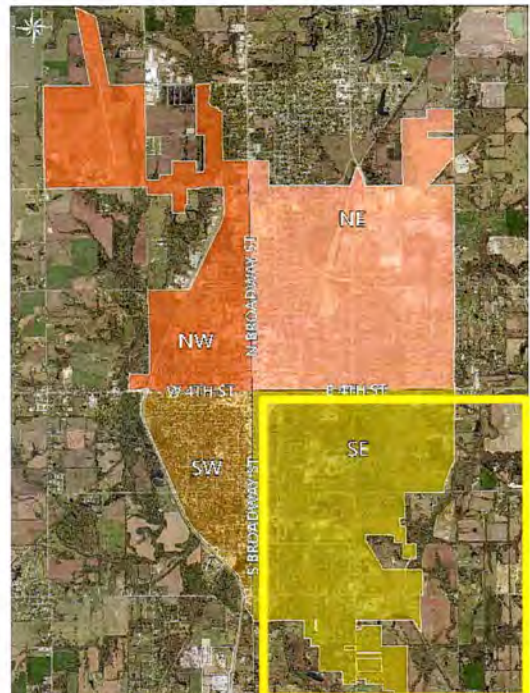
E-mail: larrywaynemiller@hotmail.com

Are you a resident of Pittsburg? Yes

If yes, how long have you lived in Pittsburg: 38 yrs.

Do you: Rent Own

This Application is for representatives living in the **Southeast Quadrant** (South of 4th Street, and East of Broadway Street). See map for quadrant boundaries.



Previous Committee/Commission Experience:

Served as a Deacon of the Pittsb. Presbyterian Church, chaired the music and worship committee - in the mid to late '90's
Served as co-chair of the parking committee at P.S.U., early '90's

Education/Experience: A resume may be attached containing this and any other information that would be helpful in evaluating your application.

For 25+ years, managed the Landscape Maintenance Dept. at P.S.U., interacting w/a wide range of individuals and groups in the campus community; retiring in 2011
2 B.S. degrees: Horticulture (O.S.U. Stillwater) and Psychology (T.U., Tulsa)

Professional and/or community service activities:

Deliver meals on wheels once per week for the past yr.
Volunteer once a week at the Crawford Co. Democratic office
Member of the Sierra Club for over 25 years
Sang and played handbells in 2 church choirs, Coached Softball Team

Please explain your reasons for wishing to serve on this council and how you feel that you may contribute:

Having entered into retirement in the wake of COVID, I have a new found interest in becoming involved and contributing what I can to my community and work to make the City of Pittsburg an even better place to live.

Area of interest (please check any/all that may apply):

- Volunteerism
- Public Policy
- Communication
- Clean Up Efforts
- Neighborhood Coordination
- Event Planning

The Neighborhood Advisory Council meets at Memorial Auditorium at 12:00 pm on the first Wednesday of each month. Appointment to this position may require you to file a Conflict of Interest Disclosure Statement, which is a public record.

Signature of Applicant: W. Miller

Date: 10-23-24

If you have any questions regarding the appointment procedure, please contact the City Clerk by phone at (620) 230-5532 or by email at tammy.nagel@pittks.org.

Please return your completed application to:

City of Pittsburg
Attn: City Clerk
PO Box 688
Pittsburg, KS 66762



RECEIVED

JAN 06 2025

Pittsburg City Clerk

Neighborhood Advisory Council (NAC)

APPLICATION FOR APPOINTMENT

Note: Your application will be copied for the City Commission and made available to the press and public

Applicable

I am seeking to fill an unexpired term on the Council.

Name: Robert Murnan _____

Home Address: 1313 Mallory Ct Pittsburg, KS 66762 _____

Home/Cell Phone: 620-249-0439 _____

Current Occupation: Benefits Enrollment Manager CHCSEK _____

Work Address: 3011 N Michigan St Pittsburg, KS 66762

Work Telephone: 620-231-9873 _____

E-mail: rmurnan@chcsek.org _____

Are you a resident of Pittsburg? Yes

If yes, how long have you lived in Pittsburg: 38 Years

Do you: Rent ____ Own X

This application is for those living in the **Northeast Quadrant** or the **Southeast Quadrant** of the city. Select the quadrant you represent:

Northeast Quadrant (North of 4th Street and East of Broadway Street)

Southeast Quadrant (South of 4th Street and East of Broadway Street)

See map for quadrant boundaries.



Previous Committee/Commission Experience:

Pittsburg Planning and Zoning Commission, Southeast Kansas Area Agency on Aging Advisory Board, Southeast Kansas Area Agency on Aging Governing Board, Pittsburg Public Library Board

Education/Experience: A resume may be attached containing this and any other information that would be helpful in evaluating your application.

Bachelor of Arts in Social Science Pittsburg State University 1985
Master of Business Administration in General Administration Pittsburg State University 1987
Branch Manager, The Sherwin Williams Company 1988-1995
Director of School Sales 1996-1999 US Awards/Zouire
Special Claims Representative Farmers Insurance Exchange 1999-2016
Benefits Enrollment CHCSEK 2016-Present

Professional and/or community service activities:

Board memberships over the years as noted above. Volunteered for various community events over the 38 years I have lived in Pittsburg. These include the Pittsburg High School Debate and Forensics Teams, Pittsburg High School Drama Department, and The Family Resource Center.

Please explain your reasons for wishing to serve on this council and how you feel that you may contribute:

Would like to volunteer and help the growth of Pittsburg for years to come.

Area of interest (please check any/all that may apply):

Volunteerism

Public Policy

Communication

Clean Up Efforts

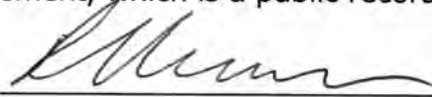
Neighborhood

Coordination Event

Planning

The Neighborhood Advisory Council meets at Memorial Auditorium at 12:00 pm on the first Wednesday of each month. Appointment to this position may require you to file a Conflict of Interest Disclosure Statement, which is a public record.

Signature of Applicant:



Date: 1-3-2025

If you have any questions regarding the appointment procedure, please contact the City Clerk by phone at (620) 230-5532 or by email at tammy.nagel@pittks.org.

Please return your completed application to:

City of Pittsburg

Attn: City Clerk

PO Box 688

Pittsburg, KS 66762